

AUSTIN METRO



METRO City/ Standard

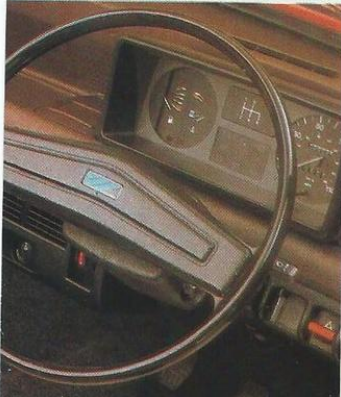


▼ Metro City fascia

▼ Metro City interior

Metro City ▲

▼ Metro City load compartm



- 998 cc 'A-Plus' power unit
- 46 bhp Economy tune engine in Standard
- 12,000 mile/annual service interval
- Side window demisters
- New shape front seats



Metro Standard fascia ▼

Metro Standard ▲

Metro Standard interior ▼



Engine

4 cylinder transverse 4 star (97 octane) fuel OHV 998 cc. City: 44 bhp. Standard: 46 bhp, Economy tune. (Alternative for Standard only – 2 star, 41 bhp unit).

Transmission

4 speed all-synchromesh, remote control. Diaphragm spring clutch, hydraulically operated. Integral final drive.

Suspension

Front: independent, Hydragas® springs, telescopic dampers, anti-roll bar. Rear independent, trailing arms, Hydragas® springs with internal damping plus coil pre-load springs.

Steering

Rack and Pinion.

Brakes

Dual circuit system with duplicated front brake lines. Front 21.3 cm discs, 17.8 cm rear drums.

Wheels and tyres

Pressed steel ventilated disc wheels, 135 x 12 steel braced radial ply tyres. Moulded hub covers.

Electrical

Metro City: 12 volt negative earth system. Alternator. Twin column stalks for indicators, horn, dip and 2-speed wipers with electric screen washers and flick wipe. Thermostatic electric cooling fan. Rear fog guard lamp. Hazard warning lamps.

Metro Standard: As Metro City plus: Reversing lamps. Heated rear window.

Instrumentation

Metro City: Printed circuit connections, speedometer with trip recorder. Fuel level and water temperature gauges. Warning lights for brake circuit failure/low fluid, brake pad wear, handbrake, oil pressure, ignition, main beam, indicators, hazard lamps and rear fog lamp. Metro Standard: As Metro City plus: Warning lamps for heated rear window and choke.

Interior Features

Metro City: Houndstooth fabric centre seat facings. New-style tilt/slide front seats. Jack-knife folding rear seat. Fitted carpet. Driver's sun visor. 2 spoke steering wheel. Colour-keyed fascia top and front parcel shelf. Fresh air heater/demister with 2-speed fan, face level air vents and side window demisters. Interior bonnet release. Concealed inertia reel front seat belts. Load space mat. Metro Standard: As Metro City plus: Hinged/detachable rear parcel shelf. New Marle fabric seat facings. Passenger's sun visor. Ticket pocket on driver's sun visor. Front door bins.

Body Features

Metro City: 2 door hatchback all steel unitary construction. Black rolled-section bumpers with moulded wrap around cappings. Driver's door mirror. Tailgate controlled by twin gas struts. 'City' decal each side of car. Fuel filler concealed behind flap. Extensive corrosion protection including Cathodic electrocoat primer on body and subframes, underbody seal and wax injection of box sections.

Metro Standard: As Metro City but with coachline less 'City' decal.

Rear window wash/wipe is optional at extra cost on Metro City and Standard models.

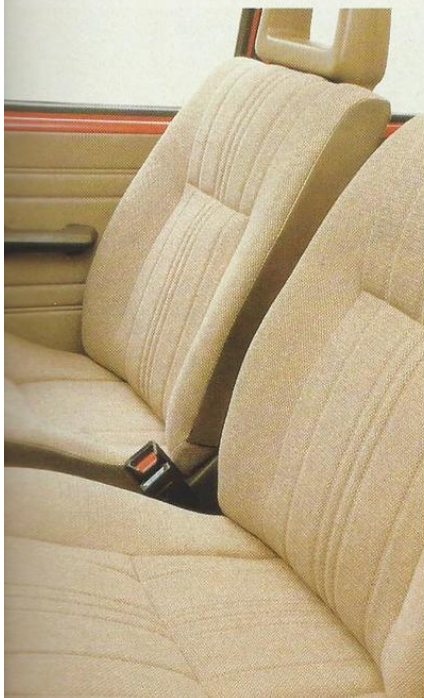
METRO 1.0L/1.3L



- Reclining front seats with head restraints
- Asymmetric split folding rear seats
- Push button LW/MW radio
- 46 bhp Economy tune engine in 1.0 L
- Brake servo and low profile tyres on 1.3 L



Split action rear seat positions



Engine

4 cylinder transverse 4-star (97 octane).
Metro 1.0L: 998 cc. 46 bhp. (Economy tune).
Metro 1.3L: 1275 cc. 62 bhp.

Transmission

4 speed all-synchromesh, remote control. Diaphragm spring clutch, hydraulically operated. Integral final drive.

Suspension

Front: independent, Hydragas® springs, telescopic dampers, anti-roll bar. Rear: independent, trailing arms, Hydragas® springs with internal damping plus coil pre-load springs.

Steering

Rack and Pinion.

Brakes

1.0L, dual circuit system with duplicated front brake lines. Front 21.3 cm discs, 17.8 cm rear drums. 1.3L as above plus: Servo assisted brakes.

Wheels and tyres

Pressed steel ventilated disc wheels, 1.0L, 135 x 12 steel braced radial ply tyres, 1.3L: 155/70 x 12 steel braced radial ply low profile tyres. Moulded hub covers.

Electrical

Metro 1.0L, 1.3L: 12 volt negative earth system. Alternator. Twin column stalks for indicators, horn, dip and 2-speed wipers with electric screen washers and flick-wipe. Thermostatic electric cooling fan. Heated rear window. Reversing lamps. Twin rear fog guard lamps. Hazard warning lamps. Rear screen wash/wipe. Illuminated switchgear and heater controls. Cigar lighter. Push button LW/MW radio.

Instrumentation

Metro 1.0L and Metro 1.3L: Printed circuit connections, speedometer with trip recorder. Fuel level and water temperature gauges. Warning lights for brake circuit failure/low fluid, brake pad wear, choke, handbrake, oil pressure, ignition, main beam, indicators, hazard lamps, heated rear window, rear fog lamps.

Interior Features

Metro 1.0L, 1.3L. New marle fabric seat facings. New-style tilt/slide front seats with reclining squabs and adjustable twin-stalk head restraints. Asymmetric split, jack-knife folding rear seats with hinged/detachable parcel shelf. Fitted carpet. Twin sun visors with driver's ticket pocket and passenger vanity mirror. Anti-dazzle rear view mirror. 4-spoke steering wheel. Moulded handbrake grip. Colour-keyed fascia top, front parcel shelf and carpet-lined glovebox. Rear quarter trays. Fresh air heater/demister with 2-speed fan, face level air vents and side window demisters. Loadspace floor mat and PVC trimmed loadspace sides. Concealed inertia reel front seat belts. Front door armrests and door bins. Interior bonnet release.

Body Features

2-door hatchback all steel unitary construction. Black rolled section bumpers with moulded wrap around cappings. Driver's door mirror. Tailgate controlled by twin gas struts. Coach lines. Fuel filler concealed behind flap. Extensive corrosion protection, including Cathodic electrocoat primer on body and subframes, underbody seal and wax injection of box sections.

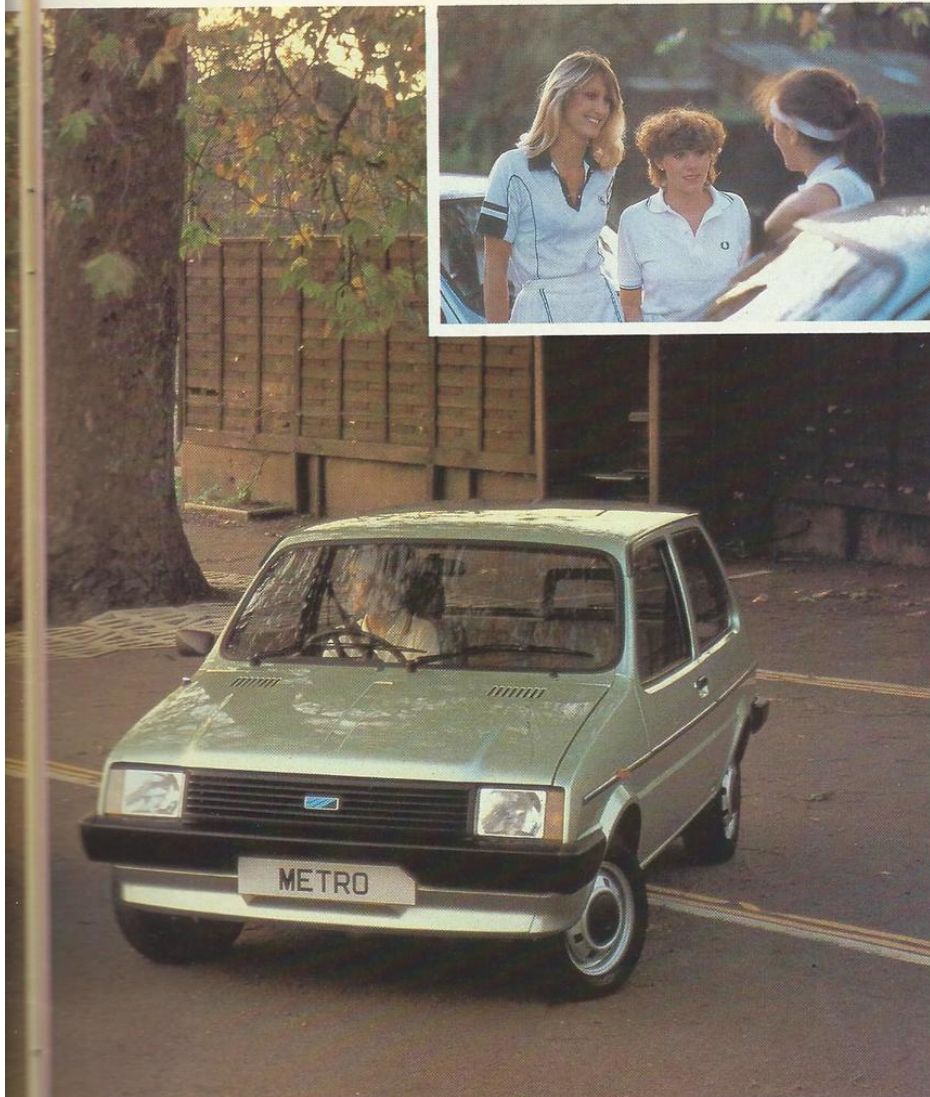
METRO 1.0 HLE 1.3 HLE



▲ Metro 1.0 HLE



- New 1.3 HLE derivative
- '3+E' transmissions
- Opening rear quarter lights
- Remote control driver's door mirror
- 64 mpg at 56 mph from 1.0 HLE



▲ Metro 1.3 HLE



Engine

4 cylinder transverse, 4 star (97 octane) fuel, OHV.
1.0 HLE: 998 cc, 46 bhp.
1.3 HLE: 1275 cc, 62 bhp.

Transmission

4-speed, '3+E' all-synchromesh, remote control.
Diaphragm spring clutch hydraulically operated. Integral final drive.

Suspension

Front: independent, Hydragas® springs, telescopic dampers, anti-roll bar.
Rear: independent, trailing arms, Hydragas® springs with internal damping plus coil pre-load springs.

Steering

Rack and Pinion.

Brakes

1.0 HLE: dual circuit system with duplicated front brake lines. Front 21.3 cm discs, 17.8 cm rear drums.
1.3 HLE: As above plus servo assisted brakes.

Wheels and tyres

Pressed steel ventilated disc wheels. 1.0 HLE: 135 x 12 Low Rolling Resistance steel braced radial ply tyres.
1.3 HLE: 155/70 x 12 Low Rolling Resistance steel braced low-profile radial ply tyres. Moulded hub covers.

Electrical

12 volt negative earth system. Alternator. Twin column stalks for indicators, horn, dip and 2 speed wipers with electric screen washers and flick wipe. Rear screen wash/wipe. Thermostatic electric cooling fan. Heated rear window. Reversing lamps. Twin rear fog guard lamps. Hazard warning lamps. Halogen headlamps incorporating front side/indicator lamps. Cigar lighter. Push-button LW/MW radio. Illuminated switchgear and heater controls. Load space lamp.

Instrumentation

Printed circuit connections. Speedometer with trip recorder. Analogue clock. Fuel level and water temperature gauges. Warning lights for: Brake circuit failure/low fluid level, brake pad wear, choke, handbrake, oil pressure, ignition, main beam, indicators, hazard lamps, heated rear window, rear fog lamps.

Interior Features

1.0 HLE: Tweed fabric seat facings. New-style, tilt/slide front seats with reclining squabs and adjustable twin-stalk head restraints. Asymmetric, jack-knife folding rear seats with hinged/detachable carpeted rear shelf. Fitted carpet. Twin sun visors with passenger vanity mirror and driver's ticket pocket. Anti-dazzle rear view mirror. 4 spoke steering wheel. Moulded hand brake grip. Colour-keyed facia top and front parcel shelf. Fresh air heater/demister with 2-speed fan, face level air vents and side window demisters. Opening rear quarter lights. Glovebox with carpeted lining. Rear quarter trays. Loadspace floor mat and PVC trimmed sides. Interior bonnet release. Concealed inertia reel, colour-keyed front seat belts. Front door armrests and door bins.

Body Features

2 door hatchback, all steel unitary construction. Black rolled section bumpers with moulded wrap around cappings. Remote control driver's door mirror. Side repeater flashers. Tailgate controlled by twin gas struts. Side rubbing strips. Fuel filler concealed behind flap. Extensive corrosion protection, including cathodic electrocoat primer on body and subframes, underbody seal and wax-injection of box sections.
1.0 HLE only: Rear tailgate spoiler.
1.3 HLE only: Laminated windscreen, bronze-tinted glass.

METRO Automatic



- 4-speed automatic gearbox
- Tweed seat facings
- Push-button LW/MW radio
- Bronze tinted glass
- Remote control driver's door mirror



Engine

4 cylinder transverse, 4 star (97 octane) fuel. OHV 1275 cc. 60.5 bhp.

Transmission

4 speed automatic with manual override facility and illuminated colour-change selector indicator. Integral final drive.

Suspension

Front: independent, Hydragas[®] springs, telescopic dampers, anti-roll bar.
Rear: independent, trailing arms, Hydragas[®] springs with internal damping plus coil pre-loaded springs.

Steering

Rack and Pinion.

Brakes

Servo assisted dual circuit system with duplicated front brake lines. Front 21.3 cm discs, 17.8 cm rear drums.

Wheels and tyres

Pressed steel ventilated disc wheels, 155/70 x 12 steel braced low-profile radial ply tyres. Moulded hub covers.

Electrical

12 volt negative earth system. Alternator. Twin column stalks for indicators, horn, dip and 2 speed wipers with electric screen washers and flick wipe. Rear screen wash/wipe. Thermostatic electric cooling fan. Heated rear window. Reversing lamps. Twin rear fog guard lamps. Hazard warning lamps. Halogen headlamps incorporating front side/indicator lamps. Cigar lighter. Push button LW/MW radio. Illuminated switchgear and heater controls. Load space lamp.

Instrumentation

Printed circuit connections. Speedometer with trip recorder. Analogue clock. Fuel level and water temperature gauges. Warning lights for: Brake circuit failure/low fluid level, brake pad wear, choke, handbrake, oil pressure, ignition, main beam, indicators, hazard lamps, heated rear window, rear fog lamps.

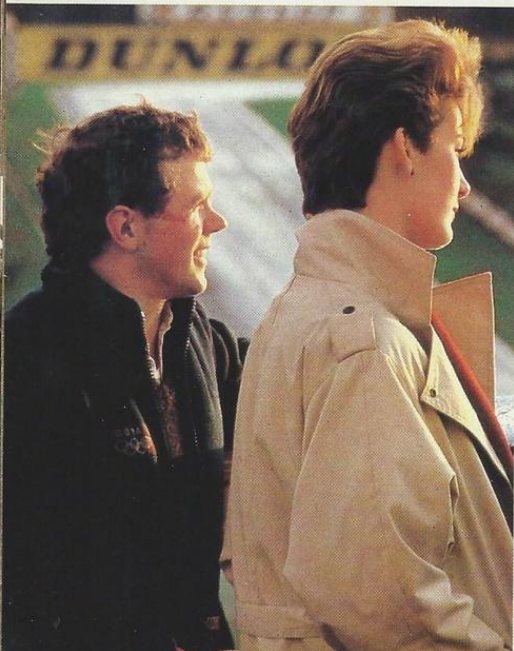
Interior Features

Tweed fabric seat facings. New style tilt/slide front seats with reclining squabs. Adjustable twin stalk front head restraints. Asymmetric, jack-knife folding rear seats with hinged/detachable carpeted parcel shelf. Fitted carpet. Twin sun visors with passenger vanity mirror and driver's ticket pocket. Anti-dazzle rear view mirror. 4 spoke steering wheel. Moulded hand-brake grip. Front parcel shelf. Fresh air heater/demister with 2-speed fan, face level air vents and side window demisters. Opening rear quarter lights. Glovebox with carpet lining. Rear quarter trays. Loadspace floor mat and PVC trimmed sides. Interior bonnet release. Concealed inertia reel colour-keyed front seat belts. Front door armrests and door bins.

Body Features

2 door hatchback, all steel unitary construction. Laminated windscreen. Bronze-tinted glass. Black rolled section bumpers with moulded wrap around cappings. Remote control driver's door mirror. Side repeater flashers. Tailgate controlled by twin gas struts. Side rubbing strip. Fuel filler concealed behind flap. Extensive corrosion protection, including cathodic electrocoat primer on body and subframes, underbody seal and wax-injection of box sections.

MG METRO 1300



- Up-rated 72 bhp power unit
- Alloy sports wheels
- Rear window spoiler
- Sports style front seats
- Opening rear quarter lights

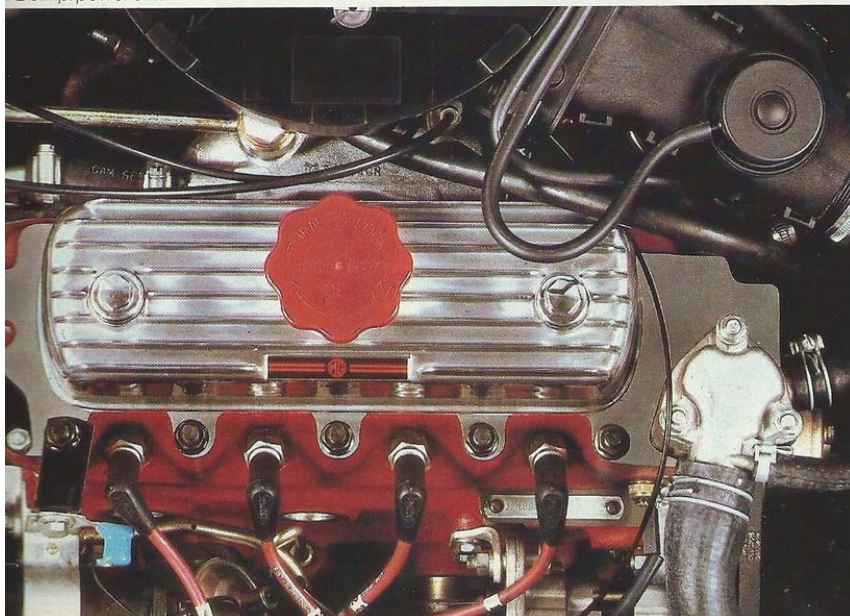


Alloy sports wheels

▼ Rear window spoiler



72 b.h.p. power unit



Engine

4 cylinder transverse, 4-star (97 octane) fuel, OHV 1275 cc. 72 bhp. Water/oil heat exchanger.

Transmission

4-speed all-synchromesh, remote control. Diaphragm spring clutch hydraulically operated. Integral final drive.

Suspension

Front: independent, Hydragas® springs, telescopic dampers, anti-roll bar.

Rear: independent, trailing arms, Hydragas® springs with internal damping plus coil pre-load springs.

Steering

Rack and Pinion.

Brakes

Servo assisted dual circuit system with duplicated front brake lines. Front 21.3 cm discs, 17.8 cm rear drums.

Wheels and tyres

Cast alloy wheels, 5 inch rims with 155/70 SR12 low profile steel braced radial ply tyres. 'MG' motif hub centres.

Electrical

12 volt negative earth system. Alternator. Twin column stalks for indicators, horn, dip and 2 speed wipers with electric screen washers and flick wipe. Rear screen wash/wipe. Thermostatic electric cooling fan. Heated rear window. Reversing lamps. Twin rear fog guard lamps. Hazard warning lamps. Halogen headlamps incorporating front side/indicator lamps. Cigar lighter. Push-button LW/MW radio. Illuminated switchgear and heater controls. Load space lamp.

Instrumentation

Printed circuit connections. Speedometer with trip recorder. Tachometer incorporating digital clock. Fuel level and water temperature gauges. Warning lights for: Brake circuit failure/low fluid level, brake pad wear, choke, handbrake, oil pressure, ignition, main beam, indicators, hazard lamps, heated rear window, rear fog lamps.

Interior Features

Grey herringbone/grey velour seat facings with red piping and style stitching. Sports-style front seats with tilt/slide, stepless reclining squabs and adjustable head restraints with herringbone-trimmed pads. Asymmetric jack-knife folding rear seats with hinged/detachable rear parcel shelf. Ribbed finish red carpeting with 'MG' motif moulded into driver's heel mat. Twin sunvisors with passenger vanity mirror and driver's ticket sleeve. Anti-dazzle rear view mirror. Grey upper fascia and front parcel shelf with 'MG' motif moulded into anti-slip liner mat. Red front seat belts with concealed inertia reels. Fresh air heater/demister with 2 speed fan, face level vents and side window demisters. Opening rear quarter lights. Passenger grab handles and coat hooks. Glovebox with carpet lining. Herringbone cloth inserts and red mylar trim strips in door casings. Door armrest/pulls. Rear quarter trays. Loadspace floor mat and PVC trimmed sides. Moulded handbrake grip. Stitched PVC gear lever gaiter. Interior bonnet release. Rigid door bins with integral radio speakers.

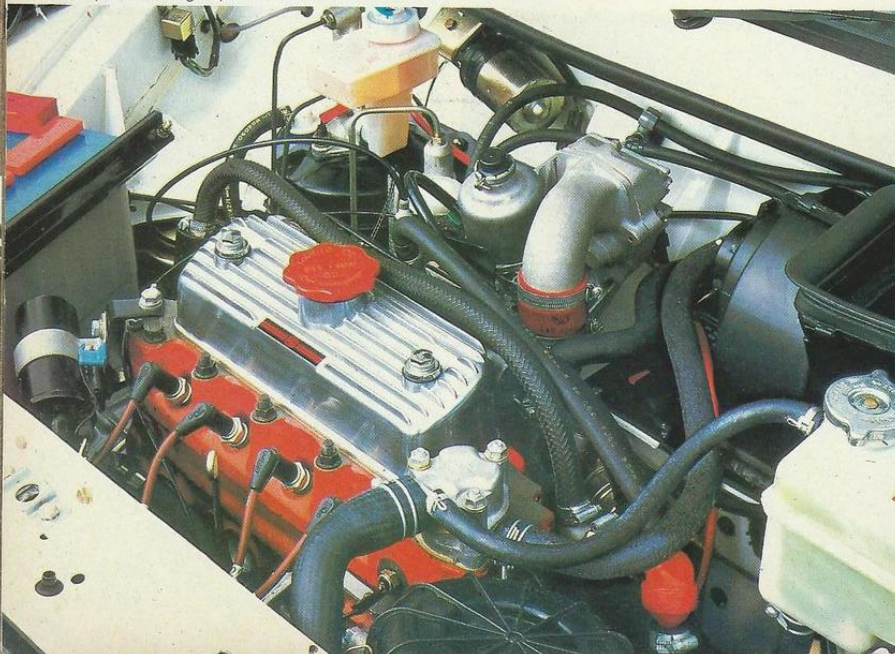
Body Features

Two door hatchback, all steel unitary construction. Laminated windscreen. Bronze tinted glass. Black rolled section bumpers with moulded wrap around cappings. Twin door mirrors with remote control on driver's mirror. Side repeater flashers. Rear window surround spoiler. Rear hatch controlled by twin gas struts. Side and rear decal tapes. Coachlines. Fuel filler concealed behind flap. Comprehensive anti-corrosion treatment, including cathodic electrocoat primer on body and subframes, underbody seal and wax injection of box sections.

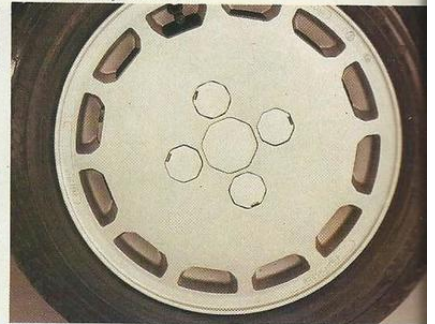
MG METRO TURBO



93 bhp turbocharged power unit ▼



13in alloy wheels ▼



Distinctive rear badging ▼



- 93 bhp turbocharged 1275 cc engine—electronic ignition
- Ventilated front disc brakes with 4-piston calipers
- Up-rated suspension, 165/60 tyres, 13 in. alloy wheels
- Moulded front spoiler with brake cooling ducts
- Light-emitting diode boost gauge



Sports style seating ▲



▼ Opening rear quarter lights



Engine

4 cylinder, transverse, 4 star (97 octane) fuel, OHV. Turbocharged 1275 cc., 93 bhp. Oil cooler.

Transmission

4 speed all synchro-mesh, remote control. Diaphragm spring clutch, hydraulically operated. Integral final drive.

Suspension

Front: Independent—up-rated Hydragas® springs, telescopic dampers and anti-roll bar.

Rear: Independent—trailing arms—up-rated Hydragas springs with internal damping plus coil pre-load springs and anti-roll bar.

Steering

Rack and Pinion.

Brakes

Servo-assisted dual circuit system with duplicated front brake lines. Ventilated front discs 21.3 cm dia., modified rear drums, 17.8 cm dia. with compensator valve.

Wheels and tyres

Cast alloy wheels, 5½ in. rims with 165/60 HR 13 ultra low profile steel braced radial ply tyres. Flush style hub and wheel nut covers.

Electrical

12 volt negative earth system. Alternator. Breakerless electronic ignition with anti-knock control. New style moulded column stalks for indicators, horn, dip and 2-speed wipers with electric screen washers and flick wipe. Rear screen wash/wipe. Heated rear window. Thermostatic electric cooling fan. Reversing lamps. Twin rear fog guard lamps. Hazard warning lamps. Halogen headlamps incorporating front side/indicator lamps. Cigar lighter. Push button LW/MW Radio. Illuminated switchgear and heater controls. Load space lamp.

Instrumentation

Printed circuit connections. Speedometer with trip recorder. Tachometer incorporating light-emitting diode boost gauge. Fuel level and water temperature gauges. Digital clock in central housing. Warning lights for: Brake circuit failure/low fluid level, brake pad wear, choke, handbrake on, oil pressure, ignition, main beam, indicators, hazard lamps, heated rear window, rear fog lamps.

Interior Features

Grey herringbone/grey velour seat facings with red piping and style stitching. Sports-style front seats with tilt/slide, stepless reclining squabs and adjustable head restraints with herringbone-trimmed pads. Asymmetric jack-knife folding rear seats with hinged/detachable carpeted rear parcel shelf. Ribbed finish red carpeting with 'MG' motif moulded into driver's heel mat. Twin sun visors with passenger vanity mirror and driver's ticket sleeve. Anti-dazzle rear view mirror. Front parcel shelf with 'MG' motif moulded into anti-slip liner mat. Red front seat belts with concealed inertia reels. Fresh air heater/demister with 2-speed fan, face level vents and side-window demisters. Opening rear quarter lights. Passenger grab handles and coat hooks. Glovebox with carpet lining. Herringbone cloth inserts and red accent strip in door casings. Door armrest/pulls. Rear quarter trays. Load space floor mat and trimmed sides. Moulded hand-brake grip. Stitched PVC gear lever gaiter. Interior bonnet release. Rigid door bins with integral radio speakers.

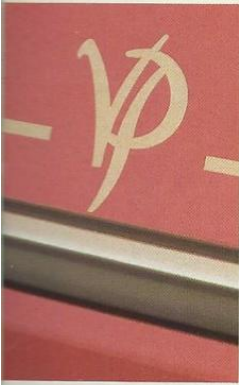
Body Features

Two door hatchback, all steel unitary construction. Laminated windscreen. Bronze tinted glass. Black rolled section bumpers with moulded wrap-around cappings. Remote control driver's door mirror plus passenger mirror. Side repeater flashers. Extra-deep moulded front spoiler with integral brake-cooling ducts. Moulded wheel arch spats. Rear window surround spoiler. Rear hatch controlled by twin gas struts. Black finished lower body sides with 'Turbo' decals. Rear badge decals on black-finished portion of rear hatch. Fuel filler concealed behind flap. Comprehensive anti-corrosion treatment, including cathodic electrocoat primer on body and subframes, underbody seal and wax injection of box sections.

METRO VANDEN PLAS



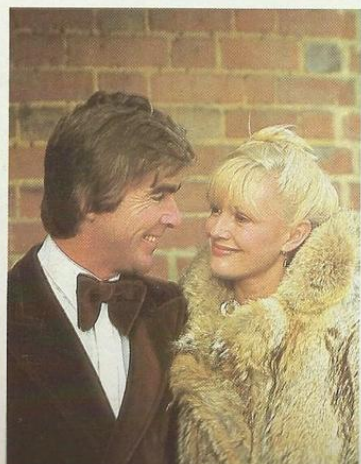
- 1275 cc power unit
- 'Raschel' luxury fabric trim
- Wood door cappings
- Glass sun roof
- Opening rear quarter lights



▲ Distinctive Vanden Plas motif



▼ Glass sun roof



Engine

4 cylinder transverse. 4-star (97 octane) fuel. OHV 1275 cc. 62 bhp.

Transmission

4-speed all-synchromesh, remote control. Diaphragm spring clutch hydraulically operated. Integral final drive. 4-speed automatic with manual override facility optional at extra cost.

Suspension

Front: independent, Hydragas® springs, telescopic dampers, anti-roll bar.
Rear: independent, trailing arms, Hydragas® springs with internal damping plus coil pre-load springs.

Steering

Rack and Pinion.

Brakes

Servo assisted dual circuit system with duplicated front brake lines. Front 21.3 cm discs, 17.8 cm rear drums.

Wheels and tyres

Pressed steel ventilated disc wheels, 155/70SR x 12 steel braced low profile radial ply tyres. Moulded hub covers with 'VP' motif and trim rings.

Electrical

12 volt negative earth system. Alternator. Twin column stalks for indicators, horn, dip and 2 speed wipers with electric screen washers and flick wipe. Rear screen wash/wipe. Thermostatic electric cooling fan. Heated rear window. Reversing lamps. Twin rear fog guard lamps. Hazard warning lamps. Halogen headlamps incorporating front side/indicator lamps. Cigar lighter. Push-button LW/MW radio. Illuminated switchgear and heater controls. Load space lamp.

Instrumentation

Printed circuit connections. Speedometer with trip recorder. Tachometer incorporating digital clock. Fuel level and water temperature gauges. Warning lights for: Brake circuit failure/low fluid level, brake pad wear, choke, handbrake, oil pressure, ignition, main beam, indicators, hazard lamps, heated rear window, rear fog lamps.

Interior Features

New 'Raschel' honeycomb-pattern knitted luxury fabric upholstery on all seating, door casings, rear quarter cases, front head restraint pads and rear armrests. New style front seats. Stepless-reclining front seat squabs and tilt/slide facility, with adjustable twin-stalk head restraints. Asymmetric, jack-knife folding rear seats with hinged/detachable rear parcel shelf. Cut pile carpeting. Full colour-keying of fascia, pillar trims, door furniture, seat fittings, seat belts, seat belt buckles and gear lever gaiter. Brushed nylon headlining. Twin sun visors with passenger vanity mirror and driver's ticket sleeve. Dipping rear view mirror. Front parcel shelf with 'VP' motif moulded into black anti-slip liner mat. Fresh air heater/demister with 2-speed fan, face level vents and side window demisters. Opening rear quarter lights. Passenger grab handles and coat hooks. Wood door cappings and carpet kick strips. Door armrest/pulls. Rigid door bins with integral radio speakers. Moulded handbrake grip and PVC gaiter. Interior bonnet release. Loadspace carpeting and trimmed sides.

Body Features

Two door hatchback, all steel unitary construction. Laminated windscreen and bronze-tinted glass all round. Bright inserts to front and rear screen surrounds. Black rolled section bumpers with moulded wrap around capping. Bright finished grille surround with grey central bars. Remote control driver's door mirror plus passenger mirror. Bright finish door handles and tailgate lift handle. Side repeater flashers. Coachlines with 'VP' motifs. Glass sun-roof. Rear hatch controlled by twin gas struts. Locking fuel filler cap concealed behind flap. Comprehensive anti-corrosion treatment, including cathodic electrocoat primer on body and subframe, underbody seal and wax injection of box sections.

TECHNICAL SUMMARY

METRO	City	Standard 1.0 L	1.0 HLE	1.3 L 1.3 Auto Vanden Plas	1.3 HLE	MG 1300	MG Turbo
Engine Capacity cc/Cylinders	998/4	998/4	998/4	1275/4	1275/4	1275/4	1275/4
Bore x Stroke mm	64.58 x 76.20	64.58 x 76.20	64.58 x 76.20	70.61 x 81.28	70.61 x 81.28	70.61 x 81.28	70.61 x 81.28
Max BHP (DIN) at RPM	44 at 5250	46 at 5500*	46 at 5500	62 ^{††} at 5600	62 at 5300	72 at 6000	93 at 6130
Max Torque kgm (DIN) at RPM	7.2 at 3000	7.5 at 3250*	7.5 at 3250	9.9 at 3100	9.9 at 3200	10.1 at 4000	11.8 at 2650
Gear Ratios Manual/Auto	1st	3.647/-	3.647/-	4.004/-	3.647/2.690	3.647/-	3.647/-
	2nd	2.185/-	2.185/-	2.307/-	2.185/1.845	2.185/-	2.185/-
	3rd	1.425/-	1.425/-	1.435/-	1.425/1.460	1.425/-	1.425/-
	4th	1.00/-	1.00/-	1.00/-	1.00/1.00	1.00/-	1.00/-
	5th	-	-	-	-	-	-
	Reverse	3.667/-	3.667/-	4.026/-	3.667/2.690	3.667/-	3.667/-
	Final Drive	3.647/-	3.647/-	3.105/-	3.44/2.76	3.105/-	3.44/-
Economy Manual Transmission							
Constant speed driving (56 mph/90 kmh)	53.1 (5.3)	56.3 (5.0)*	64.1 (4.4)	51.2 (5.5)	56.8 (5.0)	51.2 (5.5)	50.3 (5.6)
Constant speed driving (75 mph/120 kmh)	38.5 (7.3)	39.5 (7.1)*	45.3 (6.2)	37.9 (7.4)	43.7 (6.5)	39.1 (7.2)	35.1 (8.0)
Simulated urban driving	40.7 (6.9)	41.7 (6.8)	46.4 (6.1)	33.7 (8.4)	40.0 (7.1)	31.5 (9.0)	34.4 (8.2)
Automatic Transmission							
Constant speed driving (56 mph/90 kmh)	-	-	-	47.0 (6.0)	-	-	-
Constant speed driving (75 mph/120 kmh)	-	-	-	34.9 (8.1)	-	-	-
Simulated urban driving	-	-	-	33.5 (8.4)	-	-	-

All figures (in mpg-L/100 km) are from officially approved tests under the Passenger Car Fuel Consumption Order 1977.

	City	Standard 1.0 L	1.0 HLE 1.3 Auto	1.3 L Vanden Plas	1.3 HLE	MG 1300	MG Turbo
Towing Limits/Roof rack weights							
Max towing limit (2-up) (cwt/kg)	16.7/850	16.7/850	12.8/650	18.7/950	18.7/950	18.7/950	18.7/950
Max roof rack load (lb/kg)	105/48	105/48	105/48	105/48	105/48	105/48	105/48
Insurance Group (as recommended by the Accident Offices Association)	1	1	1 (HLE) 2 (Auto)	2	2	3	4
Servicing Intervals-Major/intermediate (miles)	12,000	12,000	12,000/6,000 [†]	12,000/6,000 [†]	12,000	12,000	12,000/6,000 [†]
Fuel (Star Rating)/Octane	4/97	4/97	4/97	4/97	4/97	4/97	4/97
Dimensions:	Length in/m	134.0/3.40	134.0/3.40	134.0/3.40	134.0/3.40	134.0/3.40	134.0/3.40
	Width in/m	61.2/1.55	61.2/1.55	61.2/1.55	61.2/1.55	61.2/1.55	61.5/1.56
	Height in/m	53.5/1.36	53.5/1.36	53.5/1.36	53.5/1.36	53.5/1.36	53.5/1.36
	Wheelbase in/m	88.6/2.25	88.6/2.25	88.6/2.25	88.6/2.25	88.6/2.25	88.6/2.25
	Turning circle ft/m	33.5/10.2	33.5/10.2	33.5/10.2	33.5/10.2	33.5/10.2	33.5/10.2
Load capacity-rear seat up/down-(cu ft)	7.47/45.7	7.47/45.7	7.47/45.7	7.47/45.7	7.47/45.7	7.47/45.7	7.47/45.7
Fuel tank capacity gals/litres	6.5/29.5	6.5/29.5	6.5/29.5	6.5/29.5	6.5/29.5	6.5/29.5	6.5/29.5

Optional Extras	City	Standard	1.0/1.3L	1.0HLE	1.3HLE	1.3 Auto	MG 1300	MG Turbo	Vanden Plas
Head restraints	■	■	Std	Std	Std	Std	Std	Std	Std
Laminated windscreen	■	■	■	■	Std.	Std.	Std.	Std.	Std.
Black paint finish	■	■	■	■	■	■	■	■	■
Clear Coat Metallic paint	■	■	■	■	■	■	■	■	■
Push button radio	■	■	Std.	Std.	Std.	Std.	Std.	Std.	Std.
Push button radio/stereo cassette	■	■	■	■	■	■	■	■	■
Rear window wash/wipe	■	■	Std.	Std.	Std.	Std.	Std.	Std.	Std.
Tilting/removable glass sun roof	N/A	N/A	■	■	■	■	■	■	Std.
Tilting/removable steel sun roof	N/A	N/A	■	■	■	■	■	■	N/A
Low compression engine	N/A	■ (No charge)	N/A	N/A	N/A	N/A	N/A	N/A	N/A
Heated rear window	■	Std.	Std.	Std.	Std.	Std.	Std.	Std.	Std.
Automatic transmission	N/A	N/A	N/A	N/A	N/A	Std.	N/A	N/A	■

†Oil change only -Automatic and Turbo models. *High compression engine. ††60.5 bhp on 1.3 auto.