

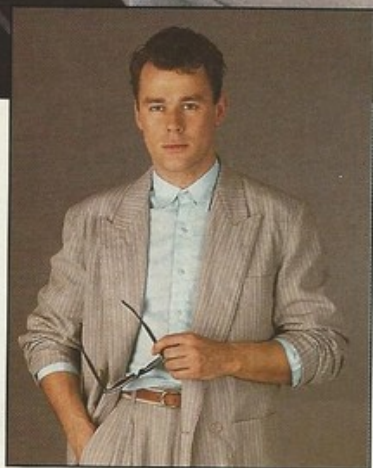


cars



THE DESIGNER METRO





THE INDIVIDUALIST...

As an individual, you choose the clothes that you wear and the furnishing for your home to suit the way you lead your life.

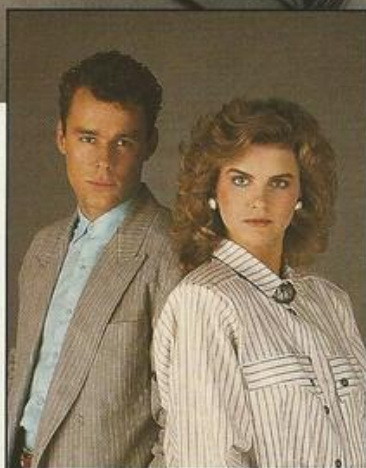
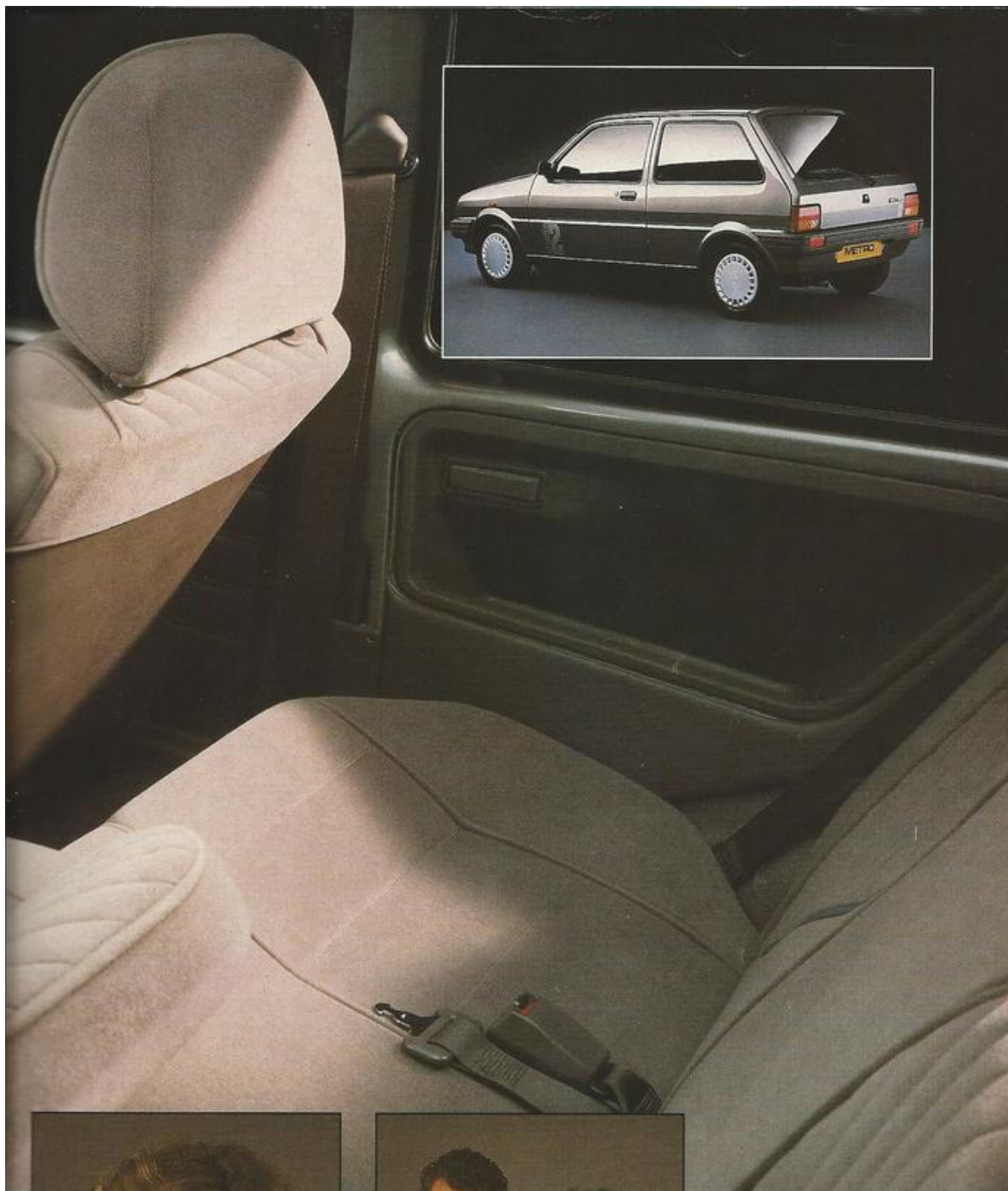
Why not choose a car to complement that way of life?

A car with character but without ostentation.

A car that subtly reflects your sense of style.

A car to express exclusivity but with that underlying sense of practicality.

The Metro Studio 2.



Fashion clothes by Principles.



...WITH CLASSIC STYLE...

The classic Steel Grey bodywork is highlighted by a Jade Green flash and the Studio 2 emblem.

The interior has an exclusive Flint Grey velour trim with complementary Jade Green highlights.

A distinctive steering wheel and the shapely front seats both bear the distinctive Studio 2 emblem while the quality feel is completed by the deep, cut-pile carpet.

For entertainment and information, a push-button radio, with two speakers, is fitted as part of the standard specification.

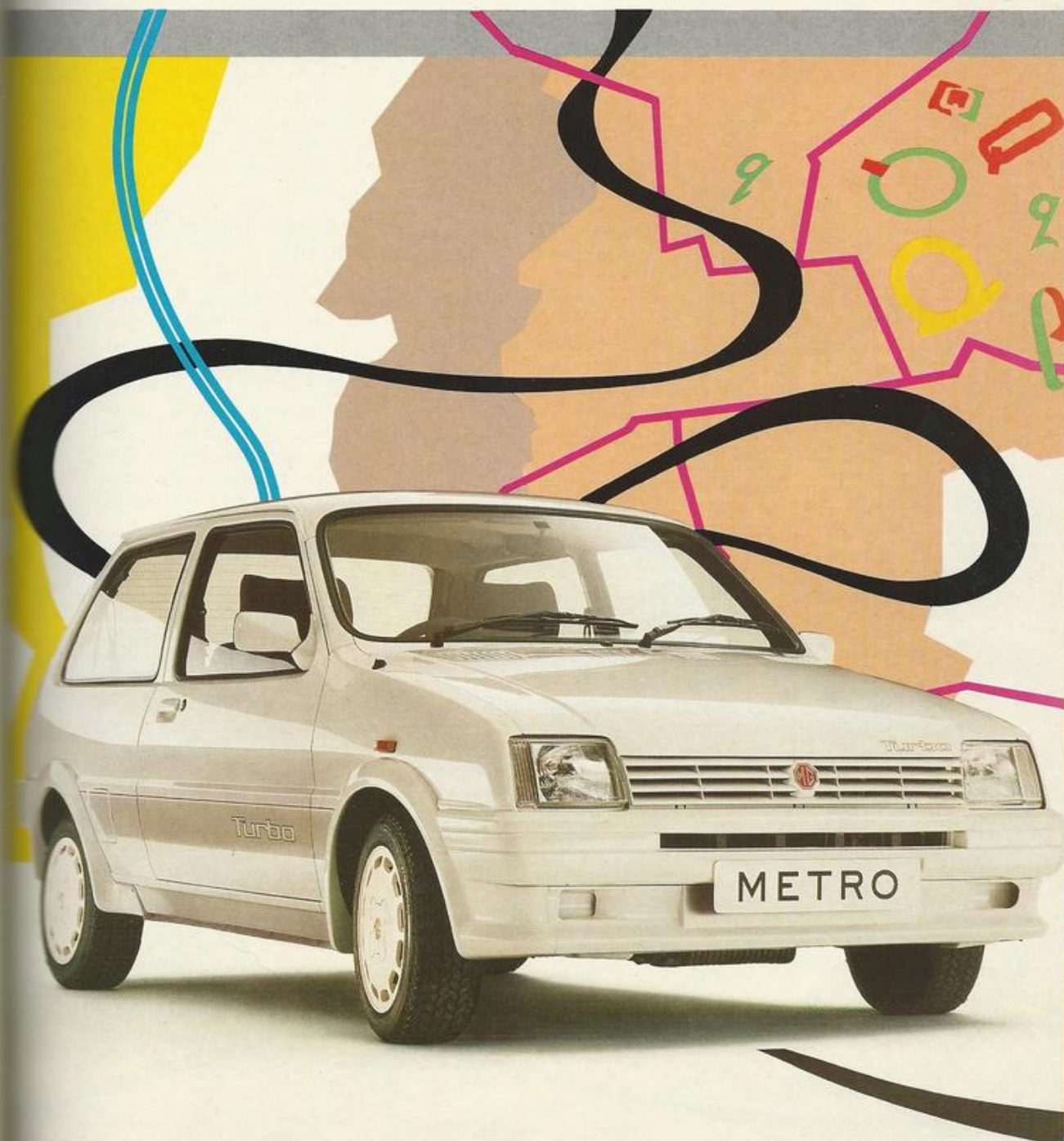


See pages 108, 109 and 110 for full specification details.



METRO

GETS YOU GOING





METRO GETS YOU GOING

Nippy, agile and mean with petrol, the Metro is the economical small car that'll take you way out in front. You'll dodge the traffic queues in style and take the tightest corners with panache. And this deft little mover will give you an almost unfair advantage when it comes to grabbing that last space in the car park.

Inside, however, you'll find that the Metro is anything but small. It won't cramp the style of even a six-footer, and there's plenty of passenger space in the back without feeling too close for comfort. With big, deep-waisted windows, the Metro feels pleasantly bright and airy. And if you frequently travel with several passengers, the wide-opening rear doors of the five-door models are at your service.

The quiet Metro

Take to the road in the latest Metro and you'll feel as though you're riding in a car twice the price. It's quieter than ever, wafting you along in limousine comfort.

Austin Rover engineers took a great deal of care over the quiet Metro. In fact, they're always making subtle improvements – and using a lot of hi-tech too. They've cocooned it in generous layers of the very latest sound insulation materials. And given some clever engineering tweaks to things like suspension mounts and gearing. Get going in the Metro and you'll be amazed at the hush it's put into the rush hour.

Another development which adds a further touch of convenience is the introduction of just one key for doors and ignition, reducing the number of keys you need to carry.

Metro measures up

Bulky loads never bother the Metro; it's been cleverly designed to take all shapes and sizes in its stride.

The roomy boot simply swallows

shopping, whilst that conveniently low sill takes the strain out of loading.

Challenge the Metro to take on two weeks holiday luggage and you'll see it disappear inside the cavernous 33.7 cu.ft. loadspace. And when you need to juggle the space between passengers and baggage, on L models upwards, that ingenious 60/40 split rear seat always comes up with the right answer.

Get going with good looks and Great style

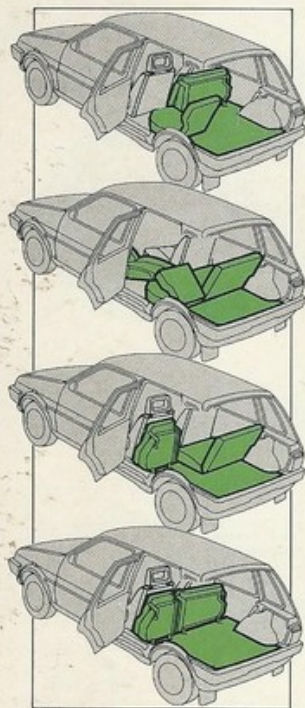
With chic looks and impressive equipment, the Metro will more than match up to your fashion sense. You'll cut a dash in the luxurious Mayfair – which now has a superb new stereo radio/cassette player. You'll turn heads in the opulent Vanden Plas, with its sumptuous Box and Plain velvet seat facings and wood veneer trim. And with even the most budget-conscious models, the Metro will always get you going in style.

The MG collection

Fall in love with the bold MGs and you'll be carried away with their sporting flair. Now, because the all-white MG Metros have been such a success they're available in a range of fashionable all-body colours. The choice is yours.

Metro keeps you going

Fuel stops are delightfully few and far between with the Metro. The Metro keeps you going a very long time between services too; all models (except the MG Turbo) need servicing only once every 12 months or 12,000 miles, cutting both cost and inconvenience.



Alternative rear seat positions (except City and City X).

There's good news if you love the refinement of an automatic gearbox. The Metro 1.3 City Automatic now makes its debut – relaxed and easy to drive, and wonderfully affordable with it.

LINE-UP

CITY	10	3 DOOR
		5 DOOR
CITY AUTO	13	3 DOOR
CITY X	10	3 DOOR
	13	5 DOOR
L	10	3 DOOR
	10	5 DOOR
	13	3 DOOR
	13	5 DOOR
AUTO	13	3 DOOR
MAYFAIR	10	3 DOOR
	13	5 DOOR
MG	13	3 DOOR
MG TURBO	13	3 DOOR
VANDEN PLAS	13	5 DOOR





METRO CITY

You'll find some artful ways of dodging the jams in your Metro City. That compact, cheeky shape makes light of the heaviest traffic. And with the 1.0 engine capable of over 45 mpg round town, you'll seldom be pushed to find a petrol station.

City can take it

You can choose between three or five doors, and enjoy plenty of leg-stretching space even with five up. The generous loadspace shrugs off the most ponderous luggage. And you'll whisk your passengers away in style, with Sawtooth fabric seat facings, and a fully colour-keyed interior. The City is more than ready for the worst of British weather too, with flick wipe and a

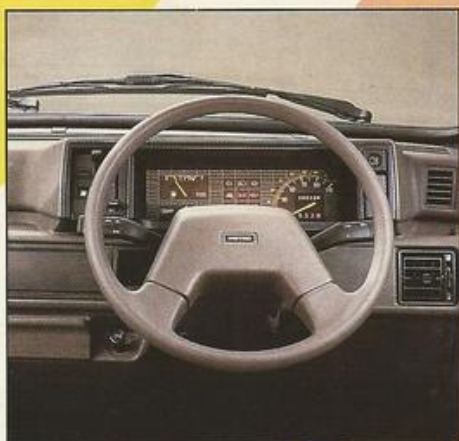
heated rear window. Latest equipment also includes a locking fuel filler cap.

New City Automatic

The refinement and ease of automatic driving is hard to beat; now it's available at a price that's hard to match. The new Metro 1.3 City Automatic has a four-speed gearbox that's sheer delight to use. You can either waft along in 'Drive,' or select the gear you want. Powered by the 1.3 engine, the City Automatic is both willing and economical. Whether you're gliding along the motorway or negotiating crowded streets, it's the next best thing to a chauffeur.



YOU'LL BE STREETS AHEAD IN YOUR CITY



- Three door or five door
- Reclining front seats
- Jack knife folding rear seat
- Heated rear window
- Twin reversing lamps

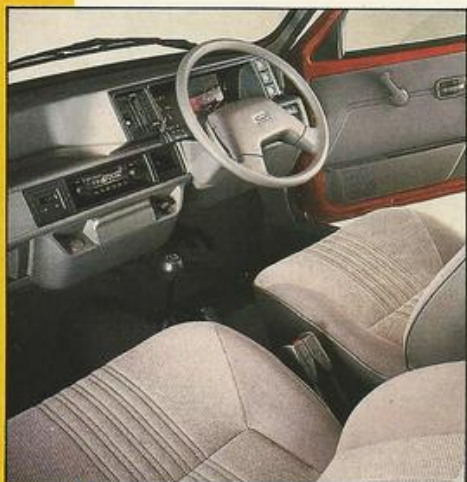




METRO CITY X



AVOID THE QUEUES



Metro City X fascia with optional radio.

- Rear wash/wipe
- Digital clock
- Marle fabric seat facings
- Front head restraints
- Rear parcel shelf

Last to first

Even when you're the last one out of the car park, you'll probably be the first one home in the Metro City X. Weaving smartly in and out of tight spaces, it's uncannily clever at avoiding traffic snarl-ups. Make a dash for the shops, and you'll love the way you can pop the City X into the parking space that has thwarted everyone else.

Tough on the street, soft on comfort

The City X doesn't mind when the going gets tough. You'll have a rear wash/wipe to fend off road spray, and twin door mirrors to make overtaking and manoeuvring even easier. You can opt for the 1.0 three-door or choose family-style accommodation from the 1.3 five-door; either way, you'll be impressed by the roominess. And by the comfortable Sonar Marle and Plain velour seat facings and front head restraints.

The City X gobbles up luggage too. When you want extra space you can remove the folding rear parcel shelf, or

fold down the back seat to open up an astonishingly big cargo area.

The A to Z of A to B

You'll go a lengthy 12 months or 12,000 miles between services. And with pound-stretching economy from both 1.0 and 1.3, you'll pass a great many filling stations before you need to pull over – avoiding yet more queues when you're getting from A to B.





METRO 1.0L/1.3L & AUTOMATIC

The hard workers that never seem to get thirsty; at a constant 56 mph, Metro 1.0L delivers up to 59.7 mpg, and the 1.3L is not far behind.

Star qualities

Mean though it is with the four-star, the Metro L will carry you along in five-star comfort. The seats have stylish Plain and Moonstripe Tweed facings. There's a cut pile carpet, digital clock, and a push-button radio with twin speakers to keep you entertained. And you'll feel immediately at home when you take the sporty, three-spoke steering wheel.

Dalmatians to DIY

With that versatile 60/40 split rear seat, the Metro L models will welcome anything from the family dog to a lawn mower — and still give you useful room in the back seat. They don't flinch at longer loads either; with one third of the rear seat folded down and the front passenger seat fully reclined, almost the full length of the car interior is at your service.



465 MILES BETWEEN WATERING HOLES*

The smooth alternative

Choose the 1.3 Metro Automatic and you'll find a car that really does know how to spoil you. With its smooth-changing four-speed gearbox, it tackles those rush hour scrums with unruffled calm and perky agility – a pick-me up in the morning and a tonic for going home.

- Plain and Moonstripe Tweed seat facings
- Push-button radio with twin speakers
- Styled halogen headlamps
- Full diameter wheel trims
- 60/40 split folding rear seat

*Manufacturer's calculation of how far a Metro 1.0L could travel on a full tank of petrol at a constant 56 mph.





METRO MAYFAIR

The one to watch

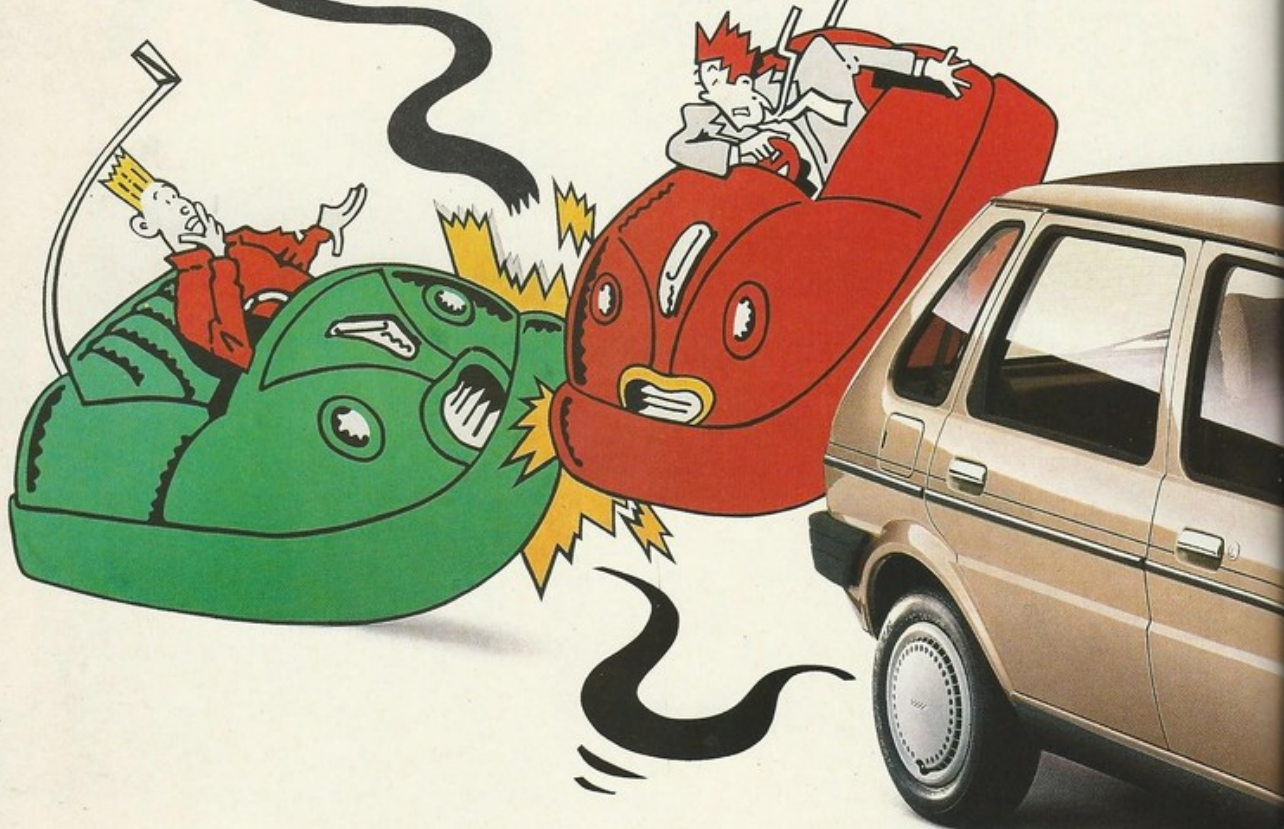
The Mayfair isn't a car in which you go unnoticed, however. With tinted glass and distinctive looks, it does tend to attract more than a few admiring glances. Your passengers are certain to comment on the classy Plain and Chalkstripe velvet seat facings – just one of the many luxuries. They'll also

find the central locking ideal for making a quick getaway to beat the rush.

The Metro Mayfair handles poor weather with equal nonchalance.

The variable delay for

When you go uptown in the Metro Mayfair you'll run rings round the traffic pile-ups. Quick and smart, it'll take you nipping through the cut and thrust of the rush hour.



DODGE THE HEAVIES



- Plain and Chalkstripe velvet seat facings
- Central locking
- Variable delay intermittent wipe
- Tinted glass
- Electronic tune stereo radio/cassette with 4 speakers

the intermittent wipe is a real bonus on rainy days; there's programmed wash/wipe, and the rear screen has intermittent wipe.

Sound to get you going

You'll approve of the Mayfair's musical tastes too. The latest addition is a superb stereo radio/cassette player with electronic tuning and four speakers. A few mornings with your favourite music sounding better than ever, and you could well be tempted to take the longer route to work.





VANDEN PLAS

Navigating through town couldn't be easier when you drive the Metro flagship. You'll find yourself sailing round traffic islands with extraordinary dexterity; and beating all comers to the last small space in the multi-storey.

Travel VIP class

Equally at home in Park Lane or at the races, the Metro Vanden Plas will get you there with a very special style.

That VP badging means VIP class – from the silver-finish grille to the polished wood glowing in the fascia and doors. You'll be cossetted by luxuries such as a glass sunroof, electric front windows and Box and Plain velvet seat facings. If you really want to spoil yourself, you can even choose leather seat trim as an extra-cost option.

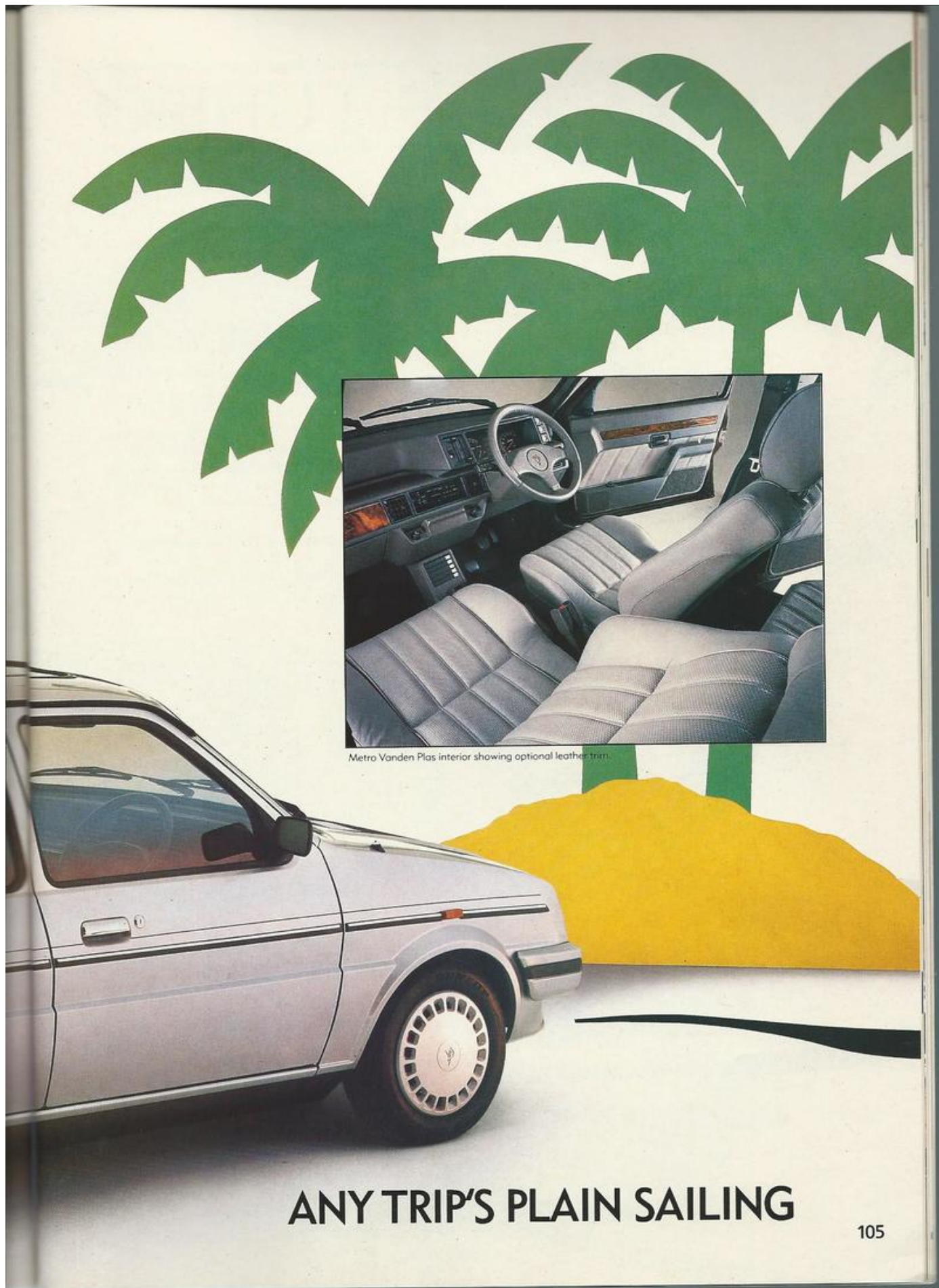
While you're cruising quietly down the high street you can enjoy the Proms courtesy of a top-quality stereo radio/

cassette player which now performs even better than before. You won't even have to lift a finger to play the other side of a cassette. The radio can store up to 25 stations and seek out more in seconds, so wherever you go you'll never be short of your favourite entertainment.

You'll be pleasantly surprised, however, at how little the longest journeys between ports of call will cost – because the Metro Vanden Plas cares as much for your budget as it does for you.

- Glass sunroof
- Electric front windows
- Electronic tune stereo radio/cassette with auto reverse and autostore
- Burr walnut veneer door and fascia trim
- Leather trimmed 3-spoke steering wheel





Metro Vanden Plas interior showing optional leather trim.

ANY TRIP'S PLAIN SAILING



1300 AND TURBO

When city life gets you down, just head for the wide open spaces and your MG will soon cheer you up. It's a carefree character, taking the toughest going as a matter of course; and tackling twists and bends with magnificent *savoir faire*.

You won't escape without turning a few heads though – particularly if

you're driving one of the latest all-body colour MGs. The all-white MG had Metro customers clamouring for more; and more is what you can have, with a choice from the most fashionable colours. On all MG 1300 models there are smart new wheel trims too; alloy wheels are optional if you really want to flaunt the MG's sporting nature.

The MG's racy personality is more than skin deep. The MG 1300 engine is a real thoroughbred, with a number of engineering developments to the cylinder head. The super-fast MG Turbo is even more sophisticated, using a microprocessor to deliver turbo boost gradually to give you a smooth, progressive surge of power right up to the rev limit.

Fast movers, civilised manners

Even while they may get you going somewhat faster than other cars, the MG 1300 and MG Turbo



MG Metro 1300 fascia.



ESCAPE – DART ACROSS THE MOORS

display the most civilised manners. You won't lack for anything, from central locking to a glass sunroof and tinted glass; and from sports style seats to a distinctly superior in-car audio system. So whether you're cutting through Oxford Street or Dartmoor, you'll always be out in front.



- MG 1300: 73PS (DIN) up-rated 1275cc engine
- MG Turbo: 94PS (DIN) turbo-charged 1275cc engine
- Glass sunroof
- Body colour spoilers, door handles and mirrors
- Sports style seats
- Central locking
- Electronic stereo radio/cassette with 4 speakers

MG Metro 1300.



MG Metro Turbo.

SPECIFICATIONS

METRO

ENGINE & TRANSMISSION

4 cylinder, transverse OHV engines.

998cc 47 PS (DIN) @ 5500 RPM.	■	—	3 dr	3dr/5dr	—	3 dr	—	—	—	—
1275cc 63 PS (DIN) @ 5300 RPM (on Vanden Plas with optional automatic gearbox only).	—	■	5 dr	3dr/5dr	■	5 dr	—	—	□	■
1275cc 72 PS (DIN) @ 6000 RPM (manual gearbox only). (with water/oil heat exchanger).	—	—	—	—	—	—	—	—	■	—
1275cc 73 PS (DIN) @ 6000 RPM (with water/oil heat exchanger).	—	—	—	—	—	—	■	—	—	—
1275cc 94 PS (DIN) @ 6130 RPM (with oil cooler).	—	—	—	—	—	—	—	■	—	—
Low compression engine (2 star fuel).	○	—	○	—	—	—	—	—	—	—
4 speed manual gearbox.	■	—	■	■	—	■	■	■	■	■
4 speed automatic gearbox (with 1275cc 63 PS engine only).	—	■	—	—	■	—	—	—	□	—

SUSPENSION

Front: Independent: Wishbone type with universal length upper and lower arms, hydragas displacers and anti-roll bar.

Rear: Independent: Trailing arms, transverse interconnected hydragas displacers.

Up-rated suspension. Rear anti-roll bar.

BRAKES, WHEELS AND TYRES

Servo-assisted, H-I split dual circuit system. Ventilated front disc brakes.

Pressed steel TD wheels with 160/65 R315 TD low profile radial tyres.

Alloy TD sports wheels with 160/65 R315 TD low profile radial tyres. Alloy spare wheel. (White wheels on white car.)

Alloy sports wheels with 165/60 HR 13 high performance low profile tyres. (White wheels on white car.)

Full wheel trims. (White on white MG.)

ELECTRICAL

Heated rear window. Alternator. Reversing lamps. Hazard warning lamps. Illuminated switches and heater controls. Twin column stalks for indicators, horn, headlamp dip and flash and windscreen wiper controls. Electric cooling fan. Side repeater flashers.

Electric windscreen washers. Two speed wipers. Flick wipe.

Rear wash/wipe

Electric windscreen washers. Programmed wash/wipe. Two speed wipers. Variable speed intermittent wipe. Intermittent flick wipe facility on rear wash/wipe.

Stylish halogen headlamps with clear indicator lenses. Twin rear fog lamps. Illuminated cigar lighter (not Studio 2).

Loadspace lamp.

Breakerless electronic ignition.

Central locking of doors and tailgate.

Electric front windows.

IN-CAR ENTERTAINMENT

Push-button LW/MW radio with twin speakers.

Electronic tune FM/LW/MW stereo radio/stereo cassette with 4 speakers and front/rear balance control.

Electronic tune FM/LW/MW stereo radio/stereo cassette with auto reverse, autostore, 4 speakers and balance control.

Electronic tune FM/LW/MW stereo radio/stereo cassette with auto reverse, autostore, music sensor system, Dolby noise reduction system, 4 speakers and balance control.

INSTRUMENTATION

Speedometer with trip recorder. Fuel level and water temperature gauges. Warning lights on instrument panel for: direction indicators (left and right), main beam, ignition/no charge, low oil pressure, brake circuit failure/low fluid level, handbrake on, choke on, front brake pad wear.

Fascia mounted digital clock.

Roof mounted console with digital clock.

Tachometer

INTERIOR FEATURES

Reclining front seats (with tilt/slide facility on 3-door cars). Colour-keyed seat belts (red on MG's) with two position upper seat belt mounting point. Jack-knife folding rear seat.

Colour-keyed fascia with parcel shelf. Colour-keyed steering wheel. Front door bins. Dipping rear-view mirror. Swivelling sunvisors. Interior bonnet release. Loadspace mat.

2 face-level vents. Coin tray. Ducted side demisters and 2-speed heater fan.

4 face-level vents. Ducted side demisters and 2-speed heater fan.

Door armrests. Handbrake grip. Hinged, detachable parcel shelf.

Stylish door armrests and front door bins with speaker housings. Carpeted glovebox with light and lid. Floor mounted centre console with styled gear lever and gaiter.

Cut-pile carpet and handbrake gaiter (not MG's).

Asymetric-split, jack-knife folding rear seat. 3-spoke steering wheel. Vanity mirror.

Front and rear passenger grab handles.

METRO

INTERIOR FEATURES (continued)

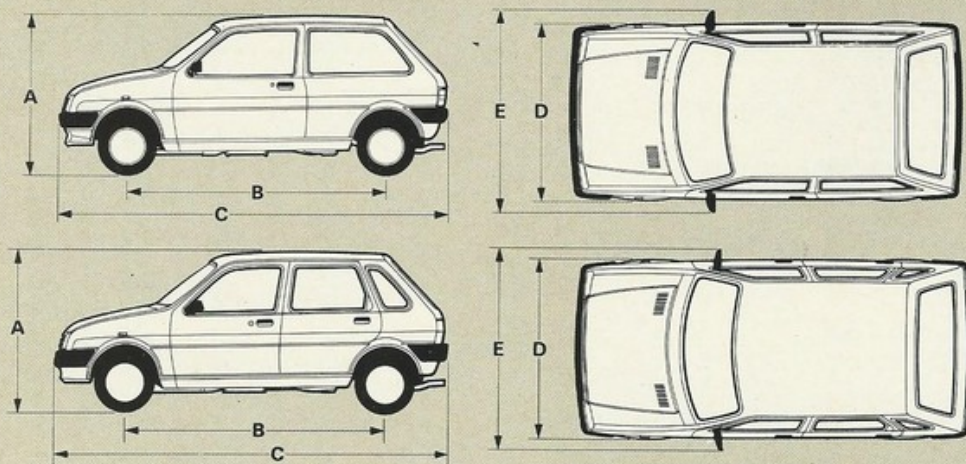
	1.0 CITY	1.3 CITY AUTO	CITY X	1.0L 1.3L	1.3 AUTO	MAYFAIR	MG	MG TURBO	VANDEN PLAS	STUDIO 2
Cloth-trim panel on doors. Carpeted rear parcel shelf. Fascia mat.	—	—	—	—	—	■	■	■	■	—
Cassette storage in centre console.	—	—	—	—	—	—	■	■	—	—
Sports front seats. Red carpet with MG logo on heelmat. Sports handbrake grip.	—	—	—	—	—	—	■	■	—	—
Leather-trimmed steering wheel. Glass panel sunroof.	—	—	—	—	—	—	—	—	■	—
Glass panel sunroof with cloth headlining. Moulded, fully-trimmed door casings with cloth trim. Burr walnut veneer trim on doors and fascia.	—	—	—	—	—	—	—	—	■	—
Leather-trimmed steering wheel. Loadspace carpet.	—	—	—	—	—	—	—	—	—	—
Unique interior. Sports front seats with upholstered head restraints and folding rear seats. Flint grey velour seat facings with Jade Green flash.	—	—	—	—	—	—	—	—	—	■
Studio 2 badges on front seats. Unique door and rear quarter casings with Jade Green flash. 3-spoke soft-feel steering wheel with unique Studio 2 centre.	—	—	—	—	—	—	—	—	—	—
Sawtooth fabric seat facings.	■	■	—	—	—	—	—	—	—	—
Front seat headrests.	□	□	■	■	■	■	■	■	■	■
Sonar Marle and Plain Velour seat facings.	—	—	■	—	—	—	—	—	—	—
Plain and Moonstripe tweed seat facings.	—	—	—	■	■	—	—	—	—	—
Plain and Chalkstripe velvet seat facings with cloth seat backs and sides. Fully adjustable and upholstered front seat headrests.	—	—	—	—	—	■	—	—	—	—
Marle Deco with Plain Velour seat facings. Fully adjustable and upholstered front seat headrests.	—	—	—	—	—	—	■	—	—	—
Sculptured Velvet and Plain Velour seat facings. Fully adjustable and upholstered front seat headrests.	—	—	—	—	—	—	—	■	—	—
Box and Plain Velvet seat facings with cloth seat backs and sides. Fully adjustable and upholstered front seat headrests.	—	—	—	—	—	—	—	—	■	—
Leather interior trim pack.	—	—	—	—	—	—	—	—	□	—
Rear seat belts.	■	■	■	■	■	■	■	■	■	■
PVC seat facings.	○	○	○	○	○	—	—	—	—	—
BODY FEATURES										
3 door hatchback body.	■	■	1.0	■	■	1.0	■	■	—	■
5 door hatchback body.	■	—	1.3	■	—	1.3	—	—	■	—
Comprehensive anti-corrosion protection. Laminated windscreen. Driver's door mirror (Remote Control on L. Auto, Mayfair, MG, MG Turbo and Vanden Plas).	■	■	■	■	■	■	■	■	■	■
Push-button tailgate release. Locking fuel filler cap.	—	—	—	—	—	—	—	—	—	—
Passenger door mirror (Remote control on MG, MG Turbo and Vanden Plas).	—	—	■	■	■	■	■	■	■	■
Moulded front and rear bumpers.	—	—	—	■	■	■	■	■	■	■
Side rubbing strip.	—	—	—	■	■	■	—	—	■	—
Bronze tinted glass. Opening rear quarter lights (3dr).	—	—	—	—	—	■	■	■	■	—
Bright inserts to front and rear screens. Silver grey grille. Bright door and tailgate handles. Coachline with Mayfair or VP logo.	—	—	—	—	—	■	—	—	■	—
Body-colour to grille, door handles, door mirrors, bumpers and rear spoiler. Side and rear tapes with MG Metro or MG Turbo logos.	—	—	—	—	—	—	■	■	—	—
Extra deep, body-colour, front spoiler. Body-colour wheelarches.	—	—	—	—	—	—	—	■	—	—
Turbo logo on leading edge of bonnet.	—	—	—	—	—	—	—	—	■	—
Body-colour bumpers with grey insert.	—	—	—	—	—	—	—	—	—	—
Glass sunroof.	—	—	—	□	□	□	■	■	■	—
Black or Clearcoat metallic paint.	□	□	□	□	□	□	□	□	□	—
Unique Steel Grey metallic paint with Studio 2 decals on front doors and tailgate.	—	—	—	—	—	—	—	—	—	■
Jade Green flash on rear wing and door.	—	—	—	—	—	—	—	—	—	—
INSURANCE GROUPS (As recommended by the Accident Offices Association).	1	2	3 dr-1 5 dr-2	1.0L-1 1.3L-2	2	3 dr-1 5 dr-2	3	4	3	2



Note: These specifications apply to UK models. Specifications for other markets may vary and are available on request.

TECHNICAL DATA

METRO



GENERAL INFORMATION (Applicable to all models)

Dimensions: **A** Height 53.5 ins. (1.36m). All models.
B Wheelbase 88.6 ins. (2.25m). All models.
C Length 134.0 ins. (3.4m). All models.
D Width (excluding door mirrors) 61.2 ins. (1.55m). All models except MG Turbo.
 61.5 ins. (1.56m) MG Turbo only.
E Width (including door mirrors) 68.0 ins. (1.73m). All models except City.
 64.9 ins. (1.65m). City only.

Turning circle: 33.5 ft. (10.2m). All models

Luggage capacity: (rear seat up) 8.1 cu. ft. (0.23 cu. m);
 (rear seat folded down) 33.7 cu. ft. (0.96 cu. m).

Fuel tank capacity: 7.8 gallons (35.4 litres)

Fuel: High compression engines — 4 star (97 RON leaded).

Low compression engines — 2 star (90 RON leaded).

Servicing intervals: 12 months/12,000 miles, whichever occurs first.

Lubrication 6 months/6,000 miles, whichever occurs first, (MG Turbo only)

ECONOMY

	Imperial mpg			Metric L/100km		
	Urban	56 mph	75 mph	Urban	90 km/h	120 km/h
1.0 City/City X/L/Mayfair	45.7	59.7	40.2	6.2	4.7	7.0
1.0 City/City X (Low Compression)	41.9	55.9	39.7	6.7	5.1	7.1
1.3 City X/L/Mayfair	40.3	57.0	41.5	7.0	5.0	6.8
1.3 City X (Low Compression)	33.7	54.9	39.8	8.4	5.1	7.1
1.3 City Auto/1.3 Auto	35.3	47.1	35.0	8.0	6.0	8.1
MG 1300	35.1	55.5	41.9	8.1	5.1	6.7
MG Turbo	34.3	53.5	37.9	8.2	5.3	7.5
Vanden Plas	35.1	56.8	41.1	8.1	5.0	6.9
Vanden Plas (Auto Option)	35.3	47.1	35.0	8.0	6.0	8.1
Studio 2	40.3	57.0	41.5	7.0	5.0	6.8

All figures (in mpg — L/100km) are from officially approved tests under the Passenger Car Fuel Consumption Order 1983.

*High Compression †Low Compression

	1.0 CITY	1.3 CITY AUTO	1.0 CITY X 3 DOOR	1.3 CITY X 5 DOOR	1.0L 3 DOOR	1.0L 5 DOOR	1.3L 3 DOOR	1.3L 5 DOOR	1.3 AUTO	1.0 MAYFAIR 3 DOOR	1.3 MAYFAIR 5 DOOR	MG	MG TURBO	VANDEN PLAS	STUDIO 2
*0 — 60 mph (secs).	17.9	15.5	17.9	13.4	18.3	19.0	12.9	13.4	15.5	18.3	13.4	10.9	9.9	11.9	12.9
*30 — 50 mph (secs). (4th gear).	13.0	N/A	13.0	11.6	13.3	14.1	11.1	11.6	N/A	13.3	11.6	10.3	10.8	12.6	11.1
*Top speed (mph).	87	92	87	97	87	87	97	97	92	87	97	103	112	101	97
Torque kgm DIN @ RPM.	7.5 @ 3250	9.9 @ 3200	7.5 @ 3250	9.9 @ 3200	7.5 @ 3250	7.5 @ 3250	9.9 @ 3200	9.9 @ 3200	9.9 @ 3200	7.5 @ 3200	9.9 @ 4000	10.1 @ 2650	11.8 @ 4000	10.1 @ 3200	9.9 @

*Manufacturer's data.

RECOMMENDED TOWING WEIGHTS

Model	Kerb Weight	Max. Towing Weight (2-up)	Tow Hitch Down Load	Roof Rack Load
1.0 City 3 door	765kg (1685lb)	850kg (1870lb)	45-55kg (100-120lb)	48kg (105lb)
1.0 City 5 door	795kg (1750lb)	850kg (1870lb)	45-55kg (100-120lb)	48kg (105lb)
1.3 City Auto 3 door	800kg (1765lb)	650kg (1435lb)	45-55kg (100-120lb)	48kg (105lb)
1.0 City X 3 door	775kg (1710lb)	850kg (1870lb)	45-55kg (100-120lb)	48kg (105lb)
1.3 City X 5 door	810kg (1785lb)	950kg (2095lb)	45-55kg (100-120lb)	48kg (105lb)
1.0L 3 door	790kg (1745lb)	850kg (1870lb)	45-55kg (100-120lb)	48kg (105lb)
1.0L 5 door	820kg (1810lb)	850kg (1870lb)	45-55kg (100-120lb)	48kg (105lb)
1.3L 3 door	800kg (1765lb)	950kg (2095lb)	45-55kg (100-120lb)	48kg (105lb)
1.3L 5 door	830kg (1830lb)	950kg (2095lb)	45-55kg (100-120lb)	48kg (105lb)
1.3 Auto 3 door	825kg (1820lb)	650kg (1435lb)	45-55kg (100-120lb)	48kg (105lb)
1.0 Mayfair 3 door	795kg (1775lb)	850kg (1870lb)	45-55kg (100-120lb)	48kg (105lb)
1.3 Mayfair 5 door	835kg (1840lb)	950kg (2095lb)	45-55kg (100-120lb)	48kg (105lb)
MG 1300 3 door	810kg (1785lb)	950kg (2095lb)	45-55kg (100-120lb)	48kg (105lb)
MG Turbo 3 door	850kg (1875lb)	950kg (2095lb)	45-55kg (100-120lb)	48kg (105lb)
VP Manual 5 door	845kg (1865lb)	950kg (2095lb)	45-55kg (100-120lb)	48kg (105lb)
VP Auto 5 door	870kg (1920lb)	650kg (1435lb)	45-55kg (100-120lb)	48kg (105lb)

EXCITING METRO CLOTHING AND GIFTS



MET4



MET4



MET5

Summer Jacket

Eye-catching casual jacket with knit collar and cuffs. Fashionable Cigesse fabric. Washable.
Code: MET4
Sizes: S, M, L, XL
Price: £25.65

Reversible Sweatshirt

Fashion and fun; chunky reversible sweatshirt in jade green and white, 50% cotton/50% acrylic; lightweight 100% polyester filling. Washable.
Code: MET5
Sizes: S, M, L, XL
Price: £20.00



GETS YOU GOING



MET6

Sweatshirt

Washable sweatshirt in 50% acrylic/50% cotton. Novel 'Q' design.
Code: MET6
Sizes: S, M, L, XL
Price: £9.55

Kagoule

Lightweight, showerproof, luxurious Cigesse fabric. Machine washable.
Code: MET3
Sizes: S, M, L, XL
Price: £27.75

Jog Trousers

To match the sweatshirt; 50% acrylic/50% cotton. Washable.
Code: MET8
Sizes: S, M, L, XL
Price: £10.70



MET1



MET022

T-Shirts

Baggy styling in 50% modal/50% cotton; choice of 'Islands' or 'Dodgems' design. Washable.
Code: Dodgems = MET0
Islands = MET1
Sizes: S, M, L, XL
Price: £4.99

Headbands

Comfortable stretch bands with cotton loop pile reverse.
Code: MET022
Price: £1.30

Wristbands

To match the headbands.
Code: MET023
Price: £1.30 per pair



MET3

MET5

TRAFFIC

Beach Towel
Dreamy island design in
luxurious 100% cotton velour.
Code: MET010
Price: £21.00

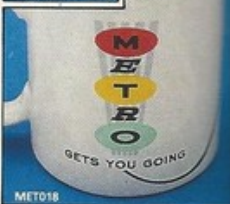
Key Fobs
Top grain leather with a multi-colour medallion.
Code: MET020
Price: £2.00



Snappy Pens
Slim pens with their own distinctive snap closing cap.
Code: M
Price: \$

Sports Caps
Fashionable padded caps with adjustable strap at the back.
Code: MET024
Price: £3.25

Child's Jog Trousers
To match the sweatshirt; 50% acrylic/50% cotton. Washable.
Code: MET9
Sizes: 26", 28" and 30"
Price: £8.35



ORDER FORM

Name: _____ Date: _____

Address: _____

Postcode: _____ Telephone Number: _____

Signature:

Please supply the following item(s):

[illegible]

Please make crossed cheques or postal orders payable to
AUSTIN ROVER GROUP LIMITED

For details of the full range catalogue phone the number below or tick here ☐

ORDER TOTAL (inc VAT + P&P)	£
--------------------------------	---

and send to:
AUSTIN ROVER MERCHANDISING SERVICE, c/o EROS MAILING COMPANY LIMITED,
PO BOX 534, ERDINGTON, BIRMINGHAM B24 0QS. TELEPHONE: 021-384 6834