

COLOURS
& TRIMS



Selecting the paint colour and trims of your new Rover car is where you really start to make it yours — individual, and distinctive, reflecting your personal taste and preference.

The gleaming finish and superb colours are the result of Rover's massive investment in state-of-the-art paint technology and one of the most modern paint plants in Europe.

To ensure a consistent and durable finish, the car body is given a comprehensive series of treatments, including electrostatically applied primer and an intermediate coat of chip resistant paint.

Further protection is provided by wax injection of box sections and a tough coating of wax applied across the body underside.

The final deep, lustrous finish is achieved by applying two colour coats — and then a coat of clear lacquer over solid*, metallic and pearlescent colours.

Your driving environment, of course, matters even more than exterior style.

Rover cars are renowned for their elegant and comfortable interiors. The seats are superbly supportive — and they look as good as they feel.

Each trim colour and fabric is carefully selected to endow a particular model with its own individual character and prestige — and all fabrics are tested to ensure they retain their colour and integrity over years of use.

So you'll find your new Rover car will keep its good looks, inside and out, for a long time to come.

The colours and trims shown in this booklet cover all the models currently produced by Rover Cars. Some of these colours and trims may not be obtainable in your country — please check availability with your Rover Dealer.

**Except White Diamond on Mini and Metro models.*



solid colours



White Diamond



Midnight Blue



Electric Blue



Ocean Blue

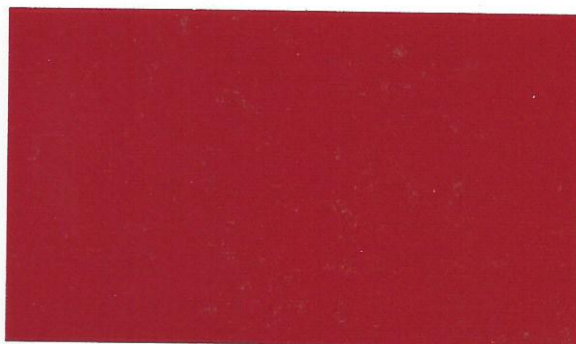


Black

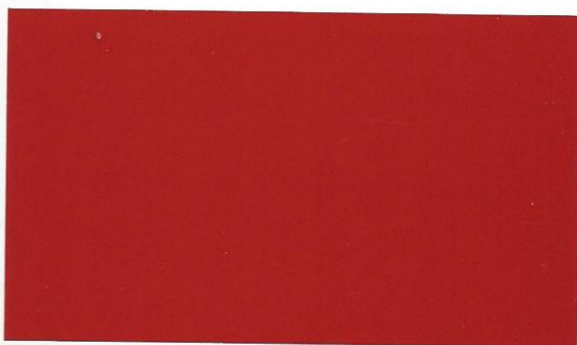
pearlescent



Pearlescent Caribbean Blue



Pearlescent Nightfire Red



Flame Red



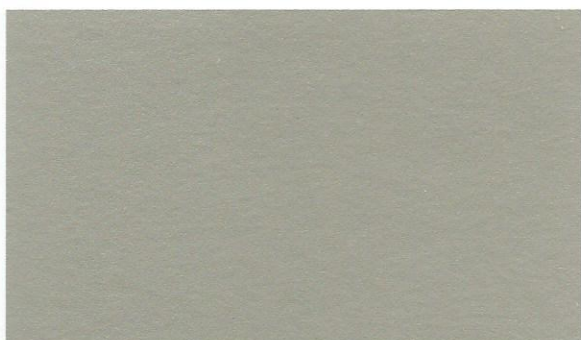
Pearlescent Tahiti Blue



Tempest Grey *Available as lower body colour on duotone Rover 200 Series.*



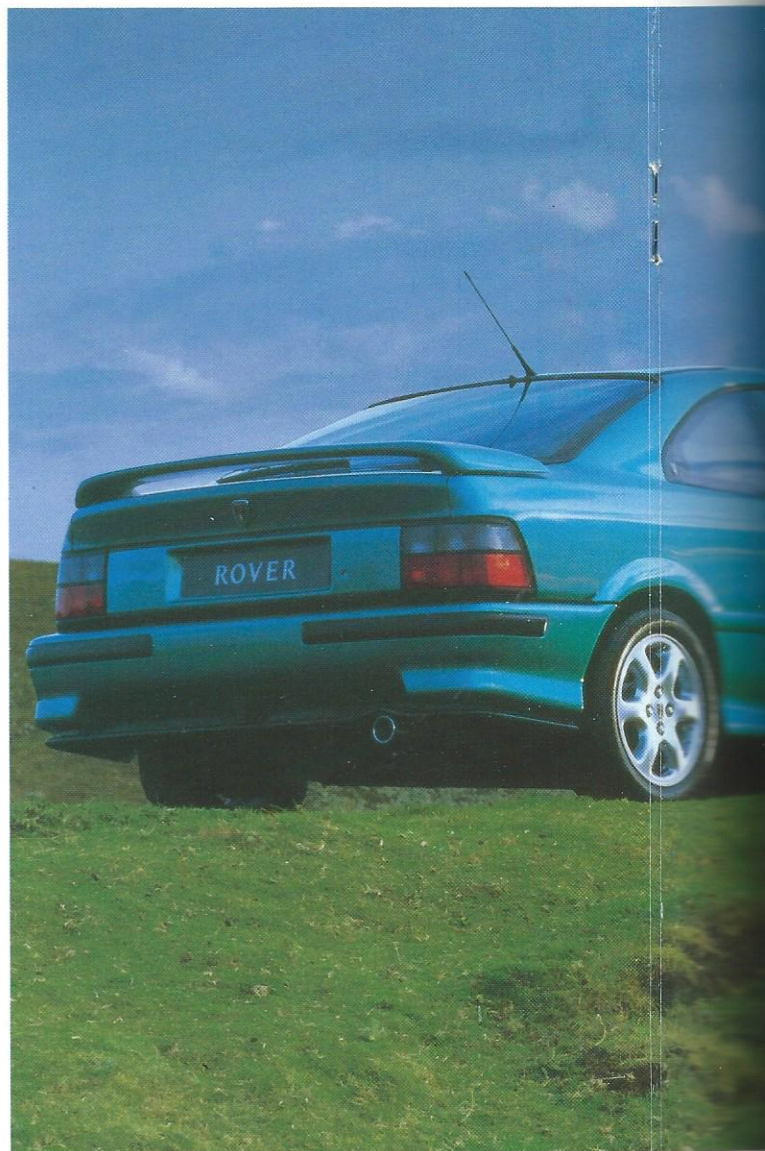
Charcoal



White Gold

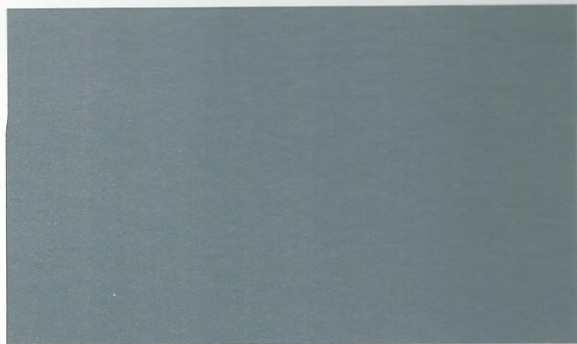
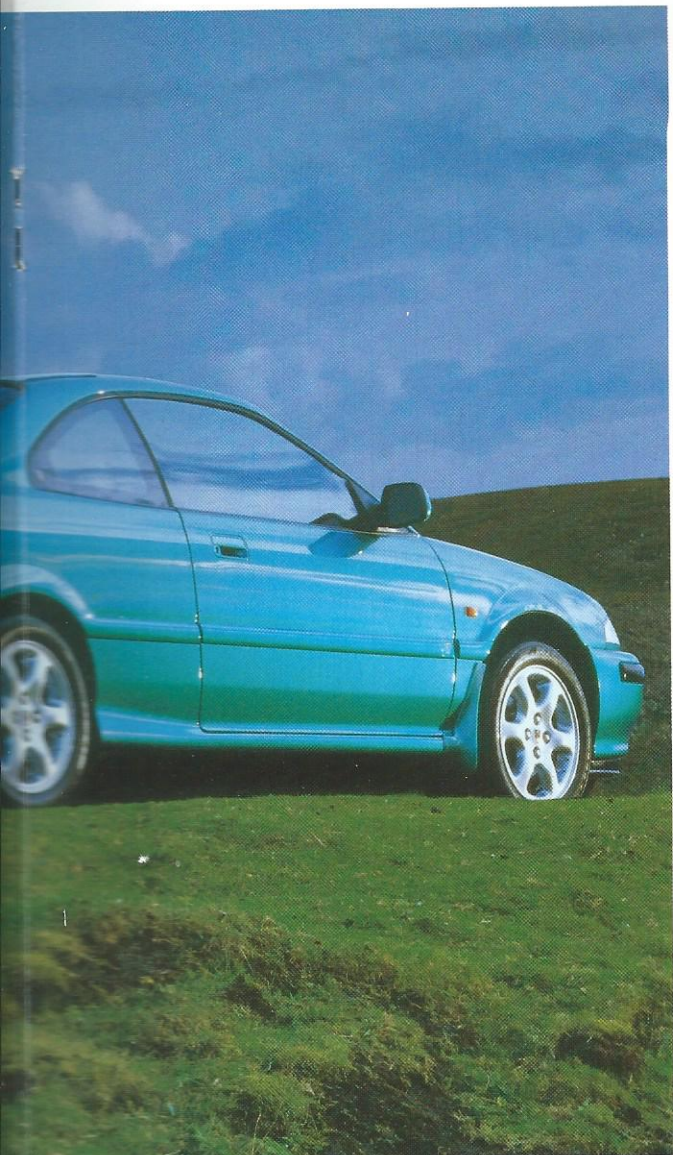


Quicksilver

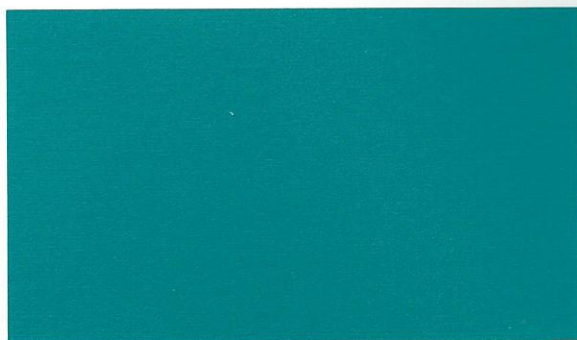


British Racing Green

t metallics



Storm Grey



Polynesian Turquoise



Pewter Grey



Nordic Blue



Granite. *Chevron*



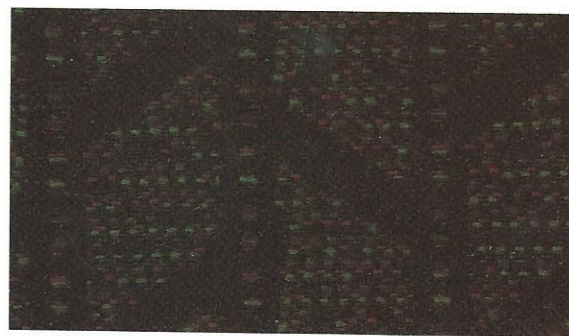
Stone Beige. *Chevron*



Stone Beige. *Silverstone*



Granite. *Silverstone*



Ash Grey. *Silverstone*

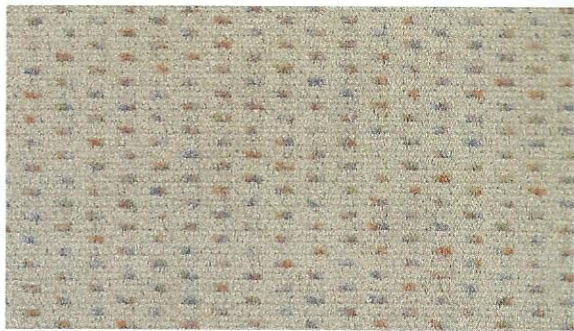


Granite. *Windsor*

ne · windsor · ascot



Ash Grey. *Windsor*



Stone. *Windsor*



Granite. *Ascot*



Granite. *Windsor*



Stone. *Ascot*

plain velour • vinyl • lightning • renaissance • harlequin



Granite. Plain Velour



Ash Grey. Plain Velour



Flint. Vinyl

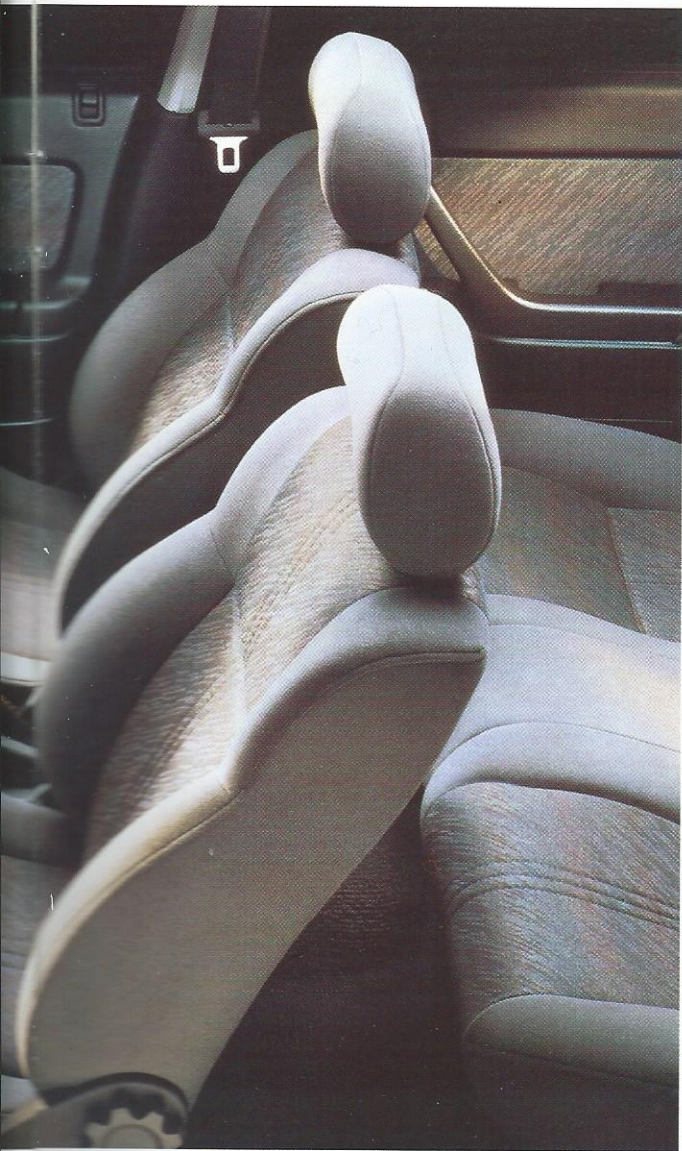


Black. Lightning



Flint. Countryman Tweed

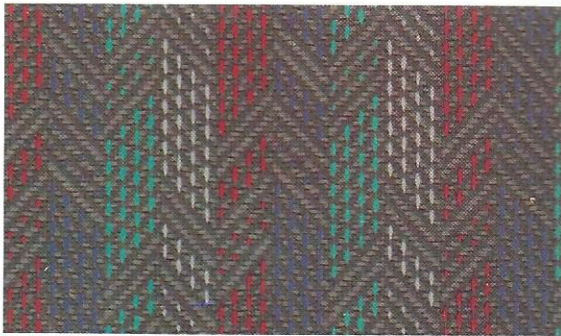
• *harlequin* • *sports crayons* • *countryman tweed*



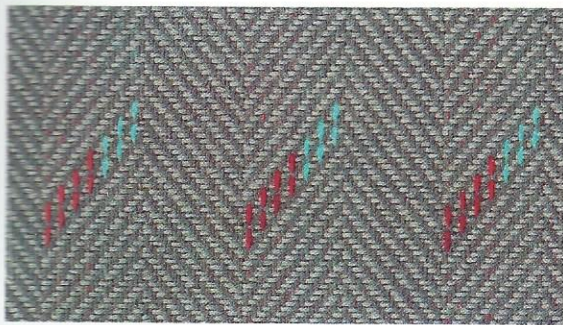
Granite. *Renaissance*



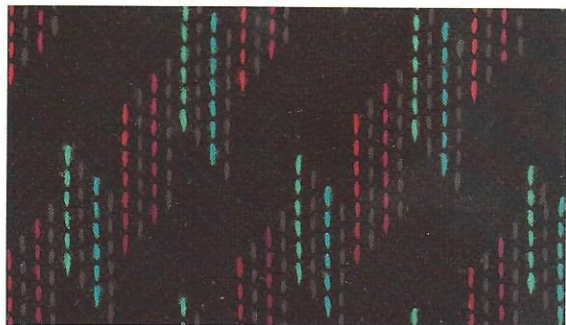
Stone Beige. *Renaissance*



Granite. *Harlequin*



Flint. *Sports Crayons*



Sports. *Harlequin*

leather



Black. *Leather*



Stone Beige. *Leather*



Light Stone Beige. *Leather*



Granite. *Perforated Leather*



Light Stone Beige. *Perforated Leather*

leather



Granite. *Leather*



Light Granite. *Leather*



Ash Grey. *Leather*



Light Stone Beige. *Perforated Leather*



IMPORTANT

The colours and finishes reproduced here are subject to the limitations of the printing process and may therefore vary slightly from the actual material. The company reserves the right to alter or withdraw any colour finish without notice.

Certain specifications are built to customer special order. For delivery availability information, please consult your Rover dealer.

