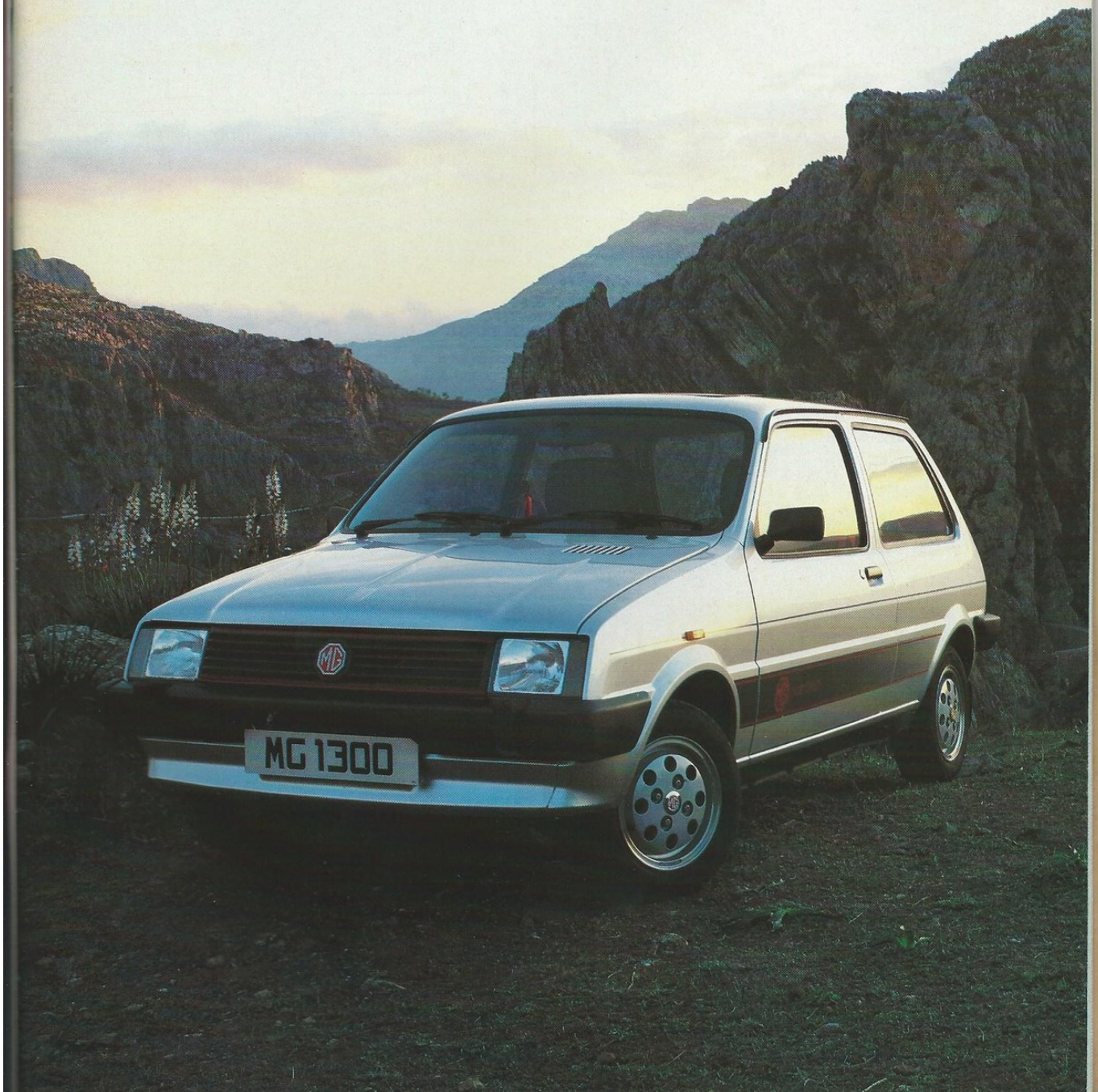


AUSTIN METRO



METRO

City/
Standard



Metro City fascia ▼



Metro City interior ▼



Metro City load compartment ▼



▲ Metro City

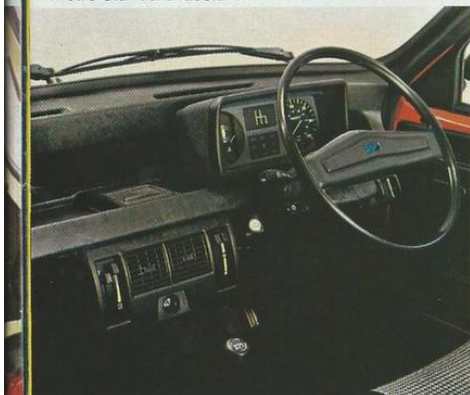
- 998 cc 'A-Plus' power unit
- 12,000-mile service interval
- Wax injection and underbody protection
- Jack-knife folding rear seat
- Fresh air heater, 2-speed fan



Metro Standard fascia ▼

Metro Standard interior ▼

▲ Metro Standard



Engine

4 cylinder transverse. 4 star (97 octane) fuel. OHV 998 cc. 45 bhp. (alternative for Standard only—2 star 41 bhp unit)

Transmission

4 speed all-synchromesh, remote control. Diaphragm spring clutch, hydraulically operated. Integral final drive.

Suspension

Front: independent, Hydragas® springs, telescopic dampers, anti-roll bar. Rear independent, trailing arms, Hydragas® springs with internal damping plus coil pre-load springs.

Steering

Rack and Pinion.

Brakes

Dual circuit system with duplicated front brake lines. Front 21.3 cm discs, 17.8 cm rear drums.

Wheels and tyres

Pressed steel ventilated disc wheels, 135 x 12 steel braced radial ply tyres. Moulded hub covers.

Electrical

Metro City: 12 volt negative earth system. Alternator. Twin column stalks for indicators, horn, dip and 2-speed wipers with electric screen washers and flick wipe. Thermostatic electric cooling fan. Rear fog guard lamp. Hazard warning lamps.
Metro Standard: As Metro City plus: Reversing lamps. Heated rear window.

Instrumentation

Metro City: Printed circuit connections, speedometer with trip recorder. Fuel level and water temperature gauges. Warning lights for brake circuit failure/low fluid, brake pad wear, handbrake, oil pressure, ignition, main beam, indicators, hazard lamps and rear fog lamp.
Metro Standard: As Metro City plus: Warning lamps for heated rear window, seat belts and choke.

Interior Features

Metro City: Vinyl seat covering. Tilt/slide front seats. Jack-knife folding rear seat. Fitted carpet. Driver's sun visor. 2 spoke steering wheel. Front parcel shelf. Fresh air heater/demister with 2-speed fan and face level air vents. Interior bonnet release. Concealed inertia reel front seat belts. Load space mat.
Metro Standard: As Metro City plus: Hinged/detachable rear parcel shelf. Houndstooth pattern fabric seat centre panels. Passenger's sun visor. Ticket pocket on driver's sun visor.

Body Features

Metro City: 2 door hatchback all steel unitary construction. Black rolled-section bumpers with moulded wrap around cappings. Driver's door mirror. Tailgate controlled by twin gas struts. Coachline and rear 'City' decal. Fuel filler concealed behind flap. Extensive corrosion protection including Cathodic electrocoat primer on body and subframes, underbody seal and wax injection of box sections.
Metro Standard: As Metro City plus: Side repeater flashers. Rear mudflaps.

METRO L/HLE



Metro L ▲

Metro HLE ▼



- Marle fabric seat facings
- Reclining front seats
- Asymmetric split folding rear seats
- HLE : Economy tune engine/gearing
- HLE : Push button radio



Split action rear seat positions



Metro L fascia ▼

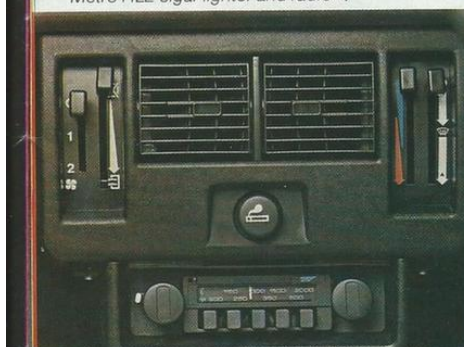
Metro L/HLE interior ▼



Metro HLE cigar lighter and radio ▼



Metro HLE fascia ▼



Engine

4 cylinder, transverse. 4 star (97 octane) fuel. OHV 998 cc.
Metro L: 45 bhp. Metro HLE: 47 bhp (Economy tune).

Transmission

4 speed all-synchromesh, remote control. Diaphragm spring clutch, hydraulically operated. Integral final drive.

Suspension

Front: independent, Hydugas® springs, telescopic dampers, anti-roll bar. Rear: independent, trailing arms, Hydugas® springs with internal damping plus coil pre-load springs.

Steering

Rack and Pinion.

Brakes

Dual circuit system with duplicated front brake lines. Front 21.3 cm discs, 17.8 cm rear drums.

Wheels and tyres

Pressed steel ventilated disc wheels, 135 x 12 steel braced radial ply tyres. Moulded hub covers.

Electrical

Metro L: 12 volt negative earth system. Alternator. Twin column stalks for indicators, horn, dip and 2-speed wipers with electric screen washers and flick-wipe. Thermostatic electric cooling fan. Heated rear window. Reversing lamps. Twin rear fog guard lamps. Hazard warning lamps. Rear screen wash/wipe. Illuminated switchgear and heater controls.
Metro HLE: As Metro L plus: Halogen headlamps incorporating front side/indicator lamps. Cigar lighter. Push button LW/MW radio.

Instrumentation

Metro L: Printed circuit connections, speedometer with trip recorder. Fuel level and water temperature gauges. Warning lights for brake circuit failure/low fluid, brake pad wear, choke, handbrake, oil pressure, seat belts, ignition, main beam, indicators, hazard lamps, heated rear window, rear fog lamps.
Metro HLE: As Metro L plus: Quartz analogue clock.

Interior Features

Laminated windscreen. Fabric seat covering. Tilt/slide front seats with reclining squabs. Asymmetric-split, jack-knife folding rear seats with hinged/detachable parcel shelf. Fitted carpet. Twin sun visors with driver's ticket pocket and passenger vanity mirror. Dipping rear view mirror. 4-spoke steering wheel. Front parcel shelf and carpet-lined glovebox. Rear quarter trays. Passenger grab handles and coat hooks. Fresh air heater/demister with 2-speed fan and face level air vents. Loadspace floor mat and PVC-trimmed loadspace sides. Concealed inertia reel front seat belts. Front door armrests and door bins. Interior bonnet release.

Body Features

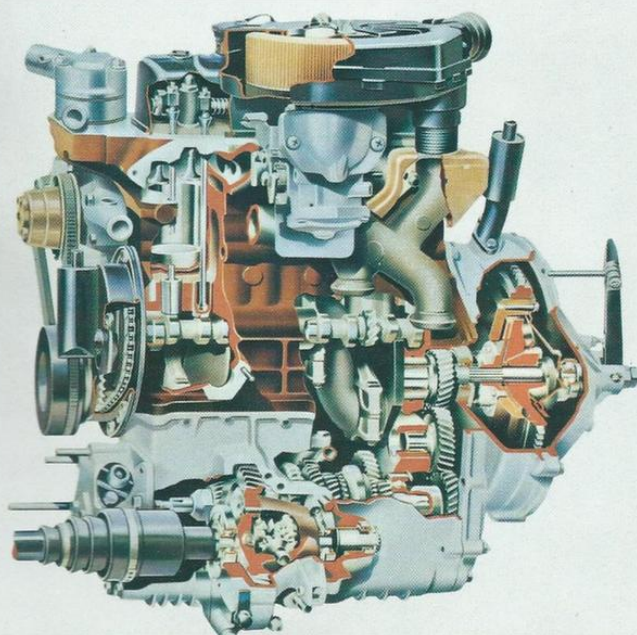
Metro L: 2-door hatchback all steel unitary construction. Black rolled section bumpers with moulded wrap around cappings. Driver's door mirror. Side repeater flashers. Tailgate controlled by twin gas struts. Double coachlines. Rear mud flaps. Fuel filler concealed behind flap. Extensive corrosion protection, including Cathodic electrocoat primer on body and subframes, underbody seal and wax injection of box sections.
Metro HLE: As Metro L with side rubbing strip in lieu of coachlines and no rear mudflaps.

METRO 1.3S

High compression
Stylised halogen
Fresh button radio
Analogue clock
Split action rear seat



- 60 bhp 1.3 'A-Plus' power unit
- Servo assisted brakes
- Herringbone fabric seat trim
- Tinted glass
- Tachometer/digital clock



Engine

4 cylinder transverse. 4-star (97 octane) fuel. OHV 1275 cc. 60 bhp.

Transmission

4-speed all-synchromesh, remote control. Diaphragm spring clutch hydraulically operated. Integral final drive.

Suspension

Front: independent, Hydugas® springs, telescopic dampers, anti-roll bar.

Rear: independent, trailing arms, Hydugas® springs with internal damping plus coil pre-load springs.

Steering

Rack and Pinion.

Brakes

Servo assisted dual circuit system with duplicated front brake lines. Front 21.3 cm discs, 17.8 cm rear drums.

Wheels and tyres

Pressed steel ventilated disc wheels, 155/70 x 12 steel braced low-profile radial ply tyres. Moulded hub covers.

Electrical

12 volt negative earth system. Alternator. Twin column stalks for indicators, horn, dip and 2 speed wipers with electric screen washers and flick wipe. Rear screen wash/wipe. Thermostatic electric cooling fan. Heated rear window. Reversing lamps. Twin rear fog guard lamps. Hazard warning lamps. Halogen headlamps incorporating front side/indicator lamps. Cigar lighter. Push-button LW/MW radio. Illuminated switchgear and heater controls.

Instrumentation

Printed circuit connections. Speedometer with trip recorder. Tachometer incorporating digital clock. Fuel level and water temperature gauges. Warning lights for: Brake circuit failure/low fluid level, brake pad wear, choke, handbrake, oil pressure, seat belt, ignition, main beam, indicators, hazard lamps, heated rear window, rear fog lamps.

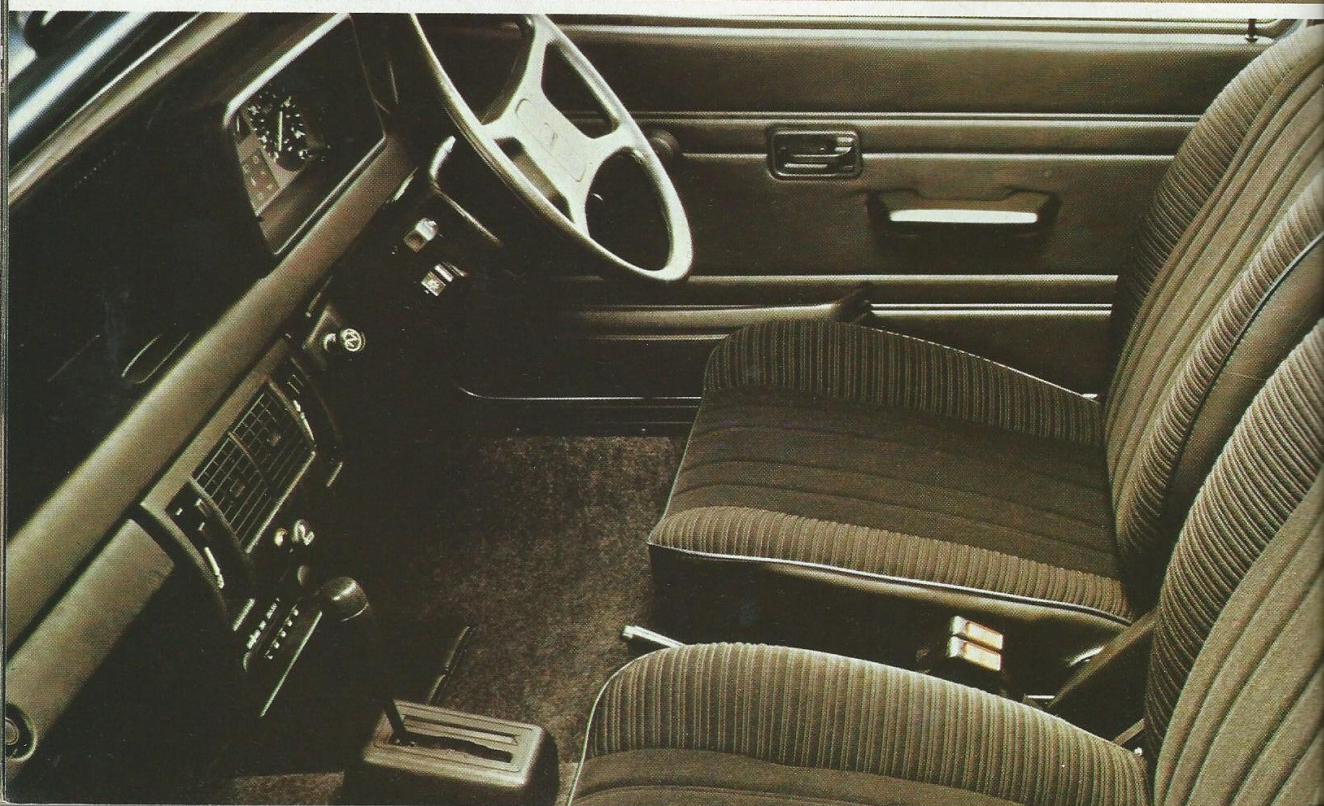
Interior Features

Laminated windscreen. Tinted glass. Herringbone fabric seat coverings. Tilt/slide front seats with reclining squabs and valances. Asymmetric, jack-knife folding rear seats with hinged/detachable carpeted rear shelf. Fitted carpet. Twin sun visors with passenger vanity mirror and driver's ticket pocket. Dipping rear view mirror. 4 spoke steering wheel. Front parcel shelf. Fresh air heater/demister with 2-speed fan and face level air vents. Passenger grab handles and coat hooks. Glovebox with carpeted lining. Rear quarter trays. Loadspace floor mat and PVC trimmed sides. Interior bonnet release. Concealed inertia reel front seat belts. Front door armrests and door bins.

Body Features

2 door hatchback, all steel unitary construction. Black rolled section bumpers with moulded wrap around cappings. Driver's door mirror. Side repeater flashers. Tailgate controlled by twin gas struts. Two-colour side decal stripes. Fuel filler concealed behind flap. Extensive corrosion protection, including cathodic electrocoat primer on body and subframes, underbody seal and wax-injection of box sections.

METRO Automatic



- New 4-speed automatic gear box
- Velour seat facings
- Split action rear seat
- Push button radio
- Styled Halogen headlamps



Engine

4 cylinder transverse. 4-star (97 octane) fuel. OHV 1275 cc. 60 bhp.

Transmission

4 speed automatic with manual override facility and illuminated colour-change selector indicator. Integral final drive.

Suspension

Front: independent, Hydragas® springs, telescopic dampers, anti-roll bar.

Rear: independent, trailing arms, Hydragas® springs with internal damping plus coil pre-load springs.

Steering

Rack and Pinion.

Brakes

Servo assisted dual circuit system with duplicated front brake lines. Front 21.3 cm discs, 17.8 cm rear drums.

Wheels and tyres

Pressed steel ventilated disc wheels, 155/70 x 12 steel braced low-profile radial ply tyres. Moulded hub covers.

Electrical

12 volt negative earth system. Alternator. Twin column stalks for indicators, horn, dip and 2 speed wipers with electric screen washers and flick wipe. Rear screen wash/wipe. Thermostatic electric cooling fan. Heated rear window. Reversing lamps. Twin rear fog guard lamps. Hazard warning lamps. Halogen headlamps incorporating front side/indicator lamps. Cigar lighter. Push-button LW/MW radio. Illuminated switchgear and heater controls.

Instrumentation

Printed circuit connections. Speedometer with trip recorder. Analogue clock. Fuel level and water temperature gauges. Warning lights for: Brake circuit failure/low fluid level, brake pad wear, choke, handbrake, oil pressure, seat belt ignition, main beam, indicators, hazard lamps, heated rear window, rear fog lamps.

Interior Features

Laminated windscreen. Velour fabric seat covering. Tilt/slide front seats with reclining squabs. Asymmetric, jack-knife folding rear seats with hinged/detachable carpeted parcel shelf. Fitted carpet. Twin sun visors with passenger vanity mirror and driver's ticket pocket. Dipping rear view mirror. 4 spoke steering wheel. Front parcel shelf. Fresh air heater/demister with 2-speed fan and face level air vents. Passenger grab handles and coat hooks. Glovebox with carpet lining. Rear quarter trays. Loadspace floor mat and PVC-trimmed sides. Interior bonnet release. Concealed inertia reel front seat belts. Front door armrests and door bins.

Body Features

2 door hatchback, all steel unitary construction. Black rolled section bumpers with moulded wrap-around cappings. Driver's door mirror. Side repeater flashers. Tailgate controlled by twin gas struts. Side rubbing strip. Fuel filler concealed behind flap. Extensive corrosion protection, including cathodic electrocoat primer on body and subframes, underbody seal and wax-injection of box sections.

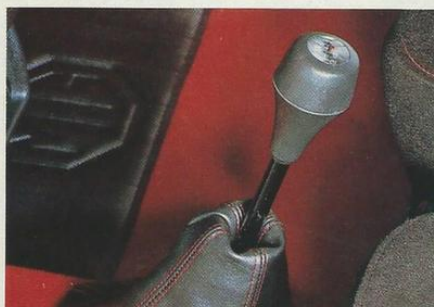
MG METRO I300



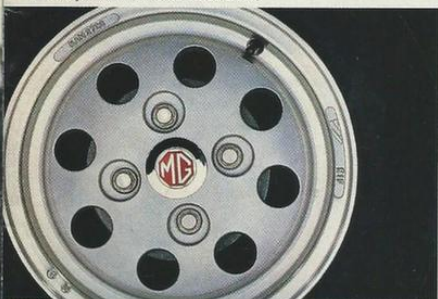
- 72 bhp power unit
- Alloy sports wheels
- Rear window spoiler
- Sports-style front seats
- MG side and rear decals



▲ Adjustable head restraints



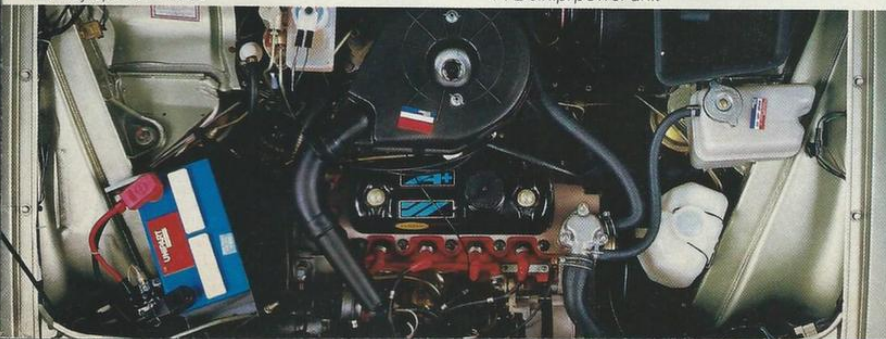
▼ Rear window spoiler



▲ Alloy sports wheels



▼ 72 b.h.p. power unit



Engine

4 cylinder transverse, 4-star (97 octane) fuel, OHV
1275 cc, 72 bhp.

Transmission

4-speed all-synchromesh, remote control. Diaphragm spring clutch hydraulically operated. Integral final drive.

Suspension

Front: independent, Hydragas® springs, telescopic dampers, anti-roll bar.
Rear: independent, trailing arms, Hydragas® springs with internal damping plus coil pre-load springs.

Steering

Rack and Pinion.

Brakes

Servo assisted dual circuit system with duplicated front brake lines. Front 21.3 cm discs, 17.8 cm rear drums.

Wheels and tyres

Cast alloy wheels, 5 inch rims with 155/70 SR12 low profile steel braced radial ply tyres. 'MG' motif hub centres.

Electrical

12 volt negative earth system. Alternator. Twin column stalks for indicators, horn, dip and 2 speed wipers with electric screen washers and flick wipe. Rear screen wash/wipe. Thermostatic electric cooling fan. Heated rear window. Reversing lamps. Twin rear fog guard lamps. Hazard warning lamps. Halogen headlamps incorporating front side/indicator lamps. Cigar lighter. Push-button LW/MW radio. Illuminated switchgear and heater controls.

Instrumentation

Printed circuit connections. Speedometer with trip recorder. Tachometer incorporating digital clock. Fuel level and water temperature gauges. Warning lights for: Brake circuit failure/low fluid level, brake pad wear, choke, handbrake, oil pressure, seat belt, ignition, main beam, indicators, hazard lamps, heated rear window, rear fog lamps.

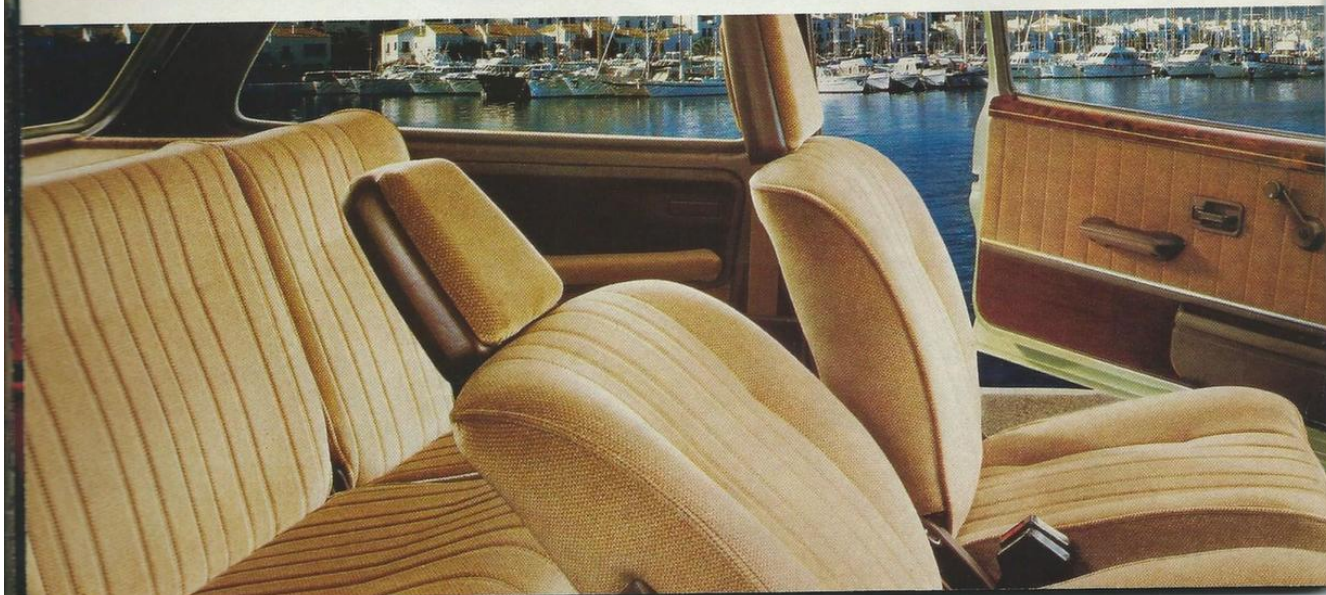
Interior Features

Grey herringbone/black velour seat facings with red piping and style stitching. Sports-style front seats with tilt/slide, stepless reclining squabs and adjustable head restraints with herringbone-trimmed pads. Asymmetric jack-knife folding rear seats with hinged/detachable rear parcel shelf. Ribbed finish red carpeting with 'MG' motif moulded into driver's heel mat. Driver's left foot rest. Twin sunvisors with passenger vanity mirror and driver's ticket sleeve. Dipping rear view mirror. Front parcel shelf with 'MG' motif moulded into anti-slip liner mat. Red front seat belts with concealed inertia reels. Fresh air heater/demister with 2 speed fan and face level vents. Passenger grab handles and coat hooks. Glovebox with carpet lining. Herringbone cloth inserts in door casings. Door armrest/pulls. Rear quarter trays. Loadspace carpeting and PVC trimmed sides. Moulded handbrake grip. Stitched PVC gear lever gaiter. Interior bonnet release. Rigid door bins with integral radio speakers.

Body Features

Two door hatchback, all steel unitary construction. Laminated windscreen. Tinted glass. Black rolled section bumpers with moulded wrap around cappings. Twin door mirrors. Side repeater flashers. Rear window surround spoiler. Rear hatch controlled by twin gas struts. Side and rear decal tapes. Coachlines. Fuel filler concealed behind flap. Rear mudflaps. Comprehensive anti-corrosion treatment, including cathodic electrocoat primer on body and subframes, underbody seal and wax injection of box sections.

METRO VANDEN PLAS



- 1275cc power unit
- 'Raschel' luxury fabric trim
- Wood door cappings
- Glass sun roof
- Optional 4-speed automatic transmission



▼ Glass sunroof

▼ Distinctive Vanden Plas badging



▼ Automatic transmission illuminated selector indicator



Engine

4 cylinder transverse. 4-star (97 octane) fuel. OHV 1275 cc. 60 bhp.

Transmission

4-speed all-synchromesh, remote control. Diaphragm spring clutch hydraulically operated. Integral final drive. 4-speed automatic with manual override facility optional at extra cost.

Suspension

Front: independent, Hydragas® springs, telescopic dampers, anti-roll bar.

Rear: independent, trailing arms, Hydragas® springs with internal damping plus coil pre-load springs.

Steering

Rack and Pinion.

Brakes

Servo assisted dual circuit system with duplicated front brake lines. Front 21.3 cm discs, 17.8 cm rear drums.

Wheels and tyres

Pressed steel ventilated disc wheels, 155/70SRx12 steel braced low profile radial ply tyres. Moulded hub covers with 'VP' motif and trim rings.

Electrical

12 volt negative earth system. Alternator. Twin column stalks for indicators, horn, dip and 2 speed wipers with electric screen washers and flick wipe. Rear screen wash/wipe. Thermostatic electric cooling fan. Heated rear window. Reversing lamps. Twin rear fog guard lamps. Hazard warning lamps. Halogen headlamps incorporating front side/indicator lamps. Cigar lighter. Push-button LW/MW radio. Illuminated switchgear and heater controls.

Instrumentation

Printed circuit connections. Speedometer with trip recorder. Tachometer incorporating digital clock. Fuel level and water temperature gauges. Warning lights for: Brake circuit failure/low fluid level, brake pad wear, choke, handbrake, oil pressure, seat belt, ignition, main beam, indicators, hazard lamps, heated rear window, rear fog lamps.

Interior Features

New 'Raschel' honeycomb-pattern knitted luxury fabric upholstery on all seating, door casings, rear quarter cases, front head restraint pads and rear armrests. Stepless-reclining front seat squabs and tilt/slide facility, with adjustable head restraints. Asymetric, jack-knife folding rear seats with hinged/detachable rear parcel shelf. Cut pile carpeting. Full colour-keying of fascia, pillar trims, door furniture, seat fittings, seat belts and gear lever gaiter. Brushed nylon headlining. Twin sun visors with passenger vanity mirror and driver's ticket sleeve. Dipping rear view mirror. Front parcel shelf with 'VP' motif moulded into colour keyed anti-slip liner mat. Fresh air heater/demister with 2-speed fan and face level vents. Passenger grab handles and coat hooks. Wood door cappings and carpet kick strips. Door armrest/pulls. Rigid door bins with integral radio speakers. Moulded handbrake grip and PVC gaiter. Interior bonnet release. Loadspace carpeting and trimmed sides.

Body Features

Two door hatchback, all steel unitary construction. Laminated windscreen and bronze-tinted glass all round. Bright inserts to front and rear screen surrounds. Black rolled section bumpers with moulded wrap around capping. Bright finished grille surround with grey central bars. Twin door mirrors. Bright finished door handles and tailgate lift handle. Side repeater flashers. Coachlines with 'VP' motifs. Glass sun-roof. Rear hatch controlled by twin gas struts. Locking fuel filler cap concealed behind flap. Rear mudflaps. Comprehensive anti-corrosion treatment, including cathodic electrocoat primer on body and subframe, underbody seal and wax injection of box sections.

TECHNICAL SUMMARY

METRO		City/ Standard/L	HLE	1.3S/ Vanden Plas	1.3 Automatic	MG
Engine Capacity cc/Cylinders		998/4	998/4	1275/4	1275/4	1275/4
Bore x Stroke mm		64.58 x 76.20	64.58 x 76.20	70.64 x 81.28	70.64 x 81.28	70.64 x 81.28
Max BHP (DIN) at RPM		45 at 5000*	47 at 5500	60 at 5250	60 at 5250	72 at 6000
Max Torque kgm (DIN) at RPM		7.77 at 2750*	7.47 at 3250	9.63 at 3200	9.63 at 3200	10.1 at 4000
Gear Ratios Manual/Auto	1st	3.647/-	3.647/-	3.647/2.690	-/2.690	3.647/-
	2nd	2.184/-	2.184/-	2.184/1.845	-/1.845	2.184/-
	3rd	1.425/-	1.425/-	1.425/1.460	-/1.460	1.425/-
	4th	1.00/-	1.00/-	1.00/1.00	-/1.00	1.00/-
	5th	-	-	-	-	-
	Reverse	3.666/-	3.666/-	3.666/2.690	-/2.690	3.666/-
	Final Drive	3.647/-	3.44/-	3.44/2.76	-/2.76	3.44/-
Economy Manual Transmission						
Constant speed driving (56 mph/90 kmh)		53.1 (5.3)*	58.3 (4.8)	51.2 (5.5)	-	51.2 (5.5)
Constant speed driving (75 mph/120 kmh)		38.5 (7.3)*	41.7 (6.8)	37.9 (7.5)	-	39.1 (7.2)
Simulated urban driving		38.4 (7.4)*	41.5 (6.8)	32.8 (8.6)	-	31.5 (9.0)
Automatic Transmission						
Constant speed driving (56 mph/90 kmh)		-	-	47.0 (6.0)	47.0 (6.0)	-
Constant speed driving (75 mph/120 kmh)		-	-	34.9 (8.1)	34.9 (8.1)	-
Urban test cycle		-	-	33.5 (8.4)	33.5 (8.4)	-
All figures (in mpg-L/100 km) are from officially approved tests under the Passenger Car Fuel Consumption Order 1977.						
Towing Limits/Roof rack weights						
Max towing limit (2-up) (cwt/kg)		16.7/850	12.8/650	18.7/950	18.7/950	18.7/950
Max roof rack load (lb/kg)		105/48	105/48	105/48	105/48	105/48
Insurance Group (as recommended by the Accident Offices Association)		1	1	2 **	2	**
Servicing Intervals-Major/intermediate (miles)		12,000	12,000	12,000/6,000†	12,000/6,000†	12,000
Fuel (Star Rating)/Octane		4/97	4/97	4/97	4/97	4/97
Dimensions: Length in/m		134.0/3.40	134.0/3.40	134.0/3.40	134.0/3.40	134.0/3.40
Width in/m		60.9/1.54	60.9/1.54	60.9/1.54	60.9/1.54	60.9/1.54
Height in/m		52.3/1.33	52.3/1.33	52.3/1.33	52.3/1.33	52.3/1.33
Wheelbase in/m		88.6/2.25	88.6/2.25	88.6/2.25	88.6/2.25	88.6/2.25
Turning circle ft/m		33.5/10.2	33.5/10.2	33.5/10.2	33.5/10.2	33.5/10.2
Load capacity (cu ft)		7.47/45.7	7.47/45.7	7.47/45.7	7.47/45.7	7.47/45.7
Fuel tank capacity gals/litres		6.5/29.5	6.5/29.5	6.5/29.5	6.5/29.5	6.5/29.5

Optional Extras	City	Standard	L	HLE	1.3S	1.3 Auto.	MG	Vanden Plas
Headlamp wash	N/A	N/A	N/A	■	■	■	■	■
Laminated windscreen	■	■	Std.	Std.	Std.	Std.	Std.	Std.
Black paint finish	■	■	■	■	■	■	■	■
Clear Coat Metallic paint	■	■	■	■	■	■	■	■
Push button radio	■	■	■	Std.	Std.	Std.	Std.	Std.
Push button radio/stereo cassette + Dolby	■	■	■	■	■	■	■	■
Rear window wash/wipe	■	■	Std.	Std.	Std.	Std.	Std.	Std.
Head restraints	N/A	N/A	■	■	■	Std.	Std.	Std.
Tilting/removable sun roof	N/A	N/A	■	■	■	■	■	Std.
Trip computer	N/A	N/A	N/A	N/A	N/A	N/A	N/A	■
Low compression engine	N/A	■ (No charge)	N/A	N/A	N/A	N/A	N/A	N/A
Heated rear window	■	Std.	Std.	Std.	Std.	Std.	Std.	Std.
Automatic transmission	N/A	N/A	N/A	N/A	N/A	Std.	N/A	■

† Oil change only. - Automatic *High compression engine. **MG and Vanden Plas insurance groups to be advised.