

AUSTIN METRO



METRO Standard/ L



- 998 cc 'A-Plus' power unit
- 12,000 mile main service interval
- Wax injection underbody protection
- Heated rear window
- Acoustic control pack



Engine

4 cylinder transverse, 4-star (97 octane) fuel OHV 998 cc, 45 bhp. (alternative: 2-star, 41 bhp unit).

Transmission

4 speed all-synchromesh, remote control. Diaphragm spring clutch, hydraulically operated. Integral final drive.

Suspension

Front: independent, Hydragas® springs, telescopic dampers, anti-roll bar. Rear: independent, trailing arms, Hydragas® springs with internal damping plus coil, pre-load springs.

Steering

Rack and Pinion.

Brakes

Dual circuit system with duplicated front brake lines. Front 21.3 cm discs, 17.8 cm rear drums.

Wheels and tyres

Pressed steel ventilated disc wheels, 135 x 12 steel braced radial ply tyres. Moulded hub covers.

Electrical

Metro: 12 volt negative earth system. Alternator. Twin column stalks for indicators, horn, dip and 2 speed wipers with electric screen washers and flick wiper. Thermostatic electric cooling fan. Heated rear window. Reversing lamps. Twin rear fog guard lamps. Hazard warning lamps.

Metro L: as Metro, plus: Rear screen wash/ wiper. Illuminated switchgear and heater controls.

Instrumentation

Metro and Metro L: Printed circuit connections, speedometer with trip recorder. Fuel level and water temperature gauges. Warning lights for brake circuit failure/low fluid, brake pad wear, choke, handbrake, oil pressure, seat belt, ignition, main beam, indicators, hazard lamps, heated rear window, rear fog lamps.

Interior Features

Metro: vinyl seat covering. Tilt/slide front seats. Jack-knife folding rear seat with hinged/ detachable carpeted rear shelf. Fitted carpet. Twin sun visors with driver's ticket pocket. Dipping rear view mirror. 4-spoke steering wheel. Front parcel shelf. Fresh-air heater/ demister with 2-speed fan and face level air vents. Loadspace floor mat. Interior bonnet release. Concealed inertia reel front-seat belts.

Metro L: as Metro plus: Laminated windscreen. Fabric seat covering. Reclining front seats. Front door armrests and door bins. Asymmetric split rear seat. Passenger grab handles and coat hooks. Glovebox with carpet lining. Rear quarter trays. Vanity mirror. PVC trimmed loadspace sides.

Body Features

Metro: 2 door hatchback all steel unitary construction. Black rolled section bumpers with moulded wrap around cappings. Driver's door mirror. Side repeater flashers. Tailgate controlled by twin gas struts. Coachline. Rear mud flaps. Fuel filler concealed behind flap. Extensive corrosion protection, including Cathodic electrocoat primer on body and subframes, underbody seal and wax injection of box sections.

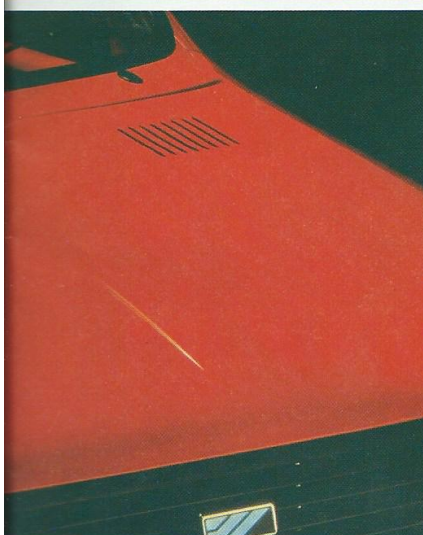
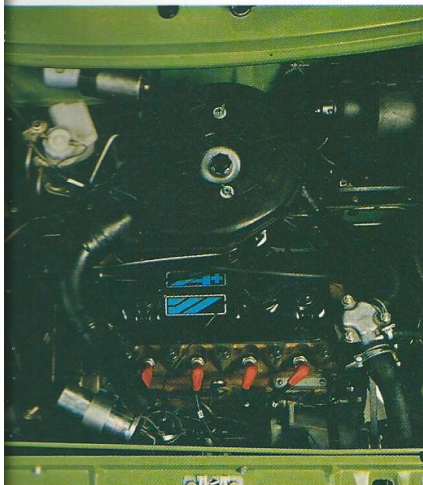
Metro L: as Metro plus: Twin coachlines.

- 1 Metro L
- 2 Metro Standard
- 3/4/5/6 Split action rear seat positions (standard on Metro L)
- 7 Metro L interior
- 8 Metro L fascia
- 9 Standard Metro fascia
- 10 Standard Metro interior

METRO HLE



- High compression 998 cc 'A-Plus' power unit
- Styled halogen headlamps
- Push button radio
- Analogue clock
- Split action rear seat



Engine

4 cylinder transverse, 4-star (97 octane) fuel, OHV 998 cc, 47 bhp, Economy tuned engine.

Transmission

4 speed all-synchromesh, remote control. Diaphragm spring clutch, hydraulically operated. Integral final drive.

Suspension

Front: independent, Hydragas® springs, telescopic dampers, anti-roll bar. Rear: independent, trailing arms, Hydragas® springs with internal damping plus coil pre-load springs.

Steering

Rack and Pinion

Brakes

Dual circuit system with duplicated front brake lines. Front 21.3 cm discs, 17.8 cm rear drums.

Wheels and tyres

Pressed steel ventilated disc wheels, 135 x 12 steel braced radial ply tyres. Moulded hub covers.

Electrical

12 volt negative earth system. Alternator. Twin column stalks for indicators, horn, dip and 2-speed wipers with electric screen washers and flick wipe. Rear screen wash/ wipe. Thermostatic electric cooling fan. Heated rear window. Reversing lamps. Twin rear fog guard lamps. Hazard warning lamps. Halogen headlamps incorporating front side/indicator lamps. Cigar lighter. Push button LW/MW radio. Illuminated switchgear and heater controls.

Instrumentation

Printed circuit connections. Speedometer with trip recorder. Quartz clock. Fuel level and water temperature gauges. Warning lights for brake circuit failure/low fluid, brake pad wear, choke, handbrake, oil pressure, seat belts, ignition, main beam, indicators, hazard lamps, heated rear window, rear fog lamps.

Interior Features

Laminated windscreen. Fabric seat covering. Tilt/slide front seats with reclining squabs. Asymmetric, jack-knife folding rear seats with hinged/detachable carpeted parcel shelf. Fitted carpet. Twin sun visors with passenger vanity mirror and driver's ticket pocket. Dipping rear view mirror. 4-spoke steering wheel. Front parcel shelf. Fresh air heater/demister with 2-speed fan and face level air vents. Passenger grab handles and coat hooks. Glovebox with carpet lining. Rear quarter trays. Loadspace floor mat and PVC trimmed sides. Interior bonnet release. Concealed inertia reel front seat belts. Front door armrests and door bins.

Body Features

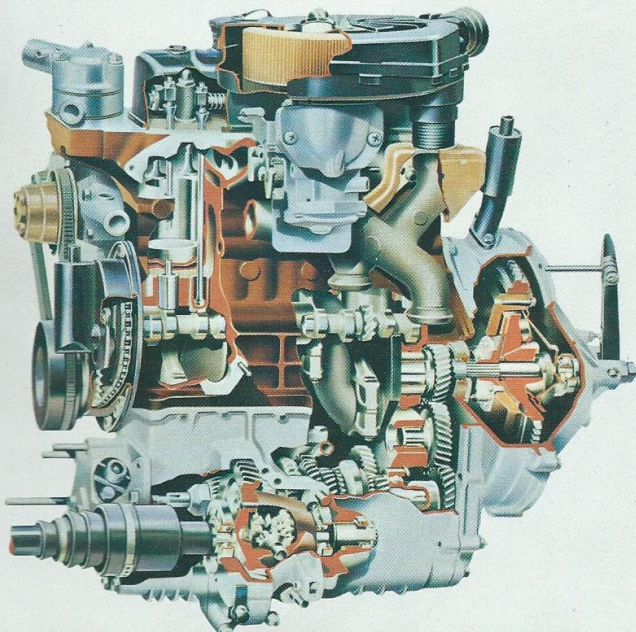
2-door hatchback, all steel unitary construction. Black rolled section bumpers with moulded wrap around cappings. Driver's door mirror. Side repeater flashers. Tailgate controlled by twin gas struts. Side rubbing strip. Fuel filler concealed behind flap. Extensive corrosion protection, including Cathodic electrocoat primer on body and subframes underbody seal and wax injection of box sections.

METRO 1.3S

High compression
Stylish halogen
Push button radio
Analogue clock
Split action rear seat



- 60 bhp 1.3 'A-Plus' power unit
- Servo assisted brakes
- Herringbone fabric seat trim
- Tinted glass
- Tachometer/digital clock



Engine

4 cylinder transverse. 4-star (97 octane) fuel. OHV 1275 cc. 60 bhp.

Transmission

4-speed all-synchromesh, remote control. Diaphragm spring clutch hydraulically operated. Integral final drive.

Suspension

Front: independent, Hydragas® springs, telescopic dampers, anti-roll bar.
Rear: independent, trailing arms, Hydragas® springs with internal damping plus coil pre-load springs.

Steering

Rack and Pinion.

Brakes

Servo assisted dual circuit system with duplicated front brake lines. Front 21.3 cm discs, 17.8 cm rear drums.

Wheels and tyres

Pressed steel ventilated disc wheels, 155/70 x 12 steel braced low-profile radial ply tyres. Moulded hub covers.

Electrical

12 volt negative earth system. Alternator. Twin column stalks for indicators, horn, dip and 2 speed wipers with electric screen washers and flick wipe. Rear screen wash/wipe. Thermostatic electric cooling fan. Heated rear window. Reversing lamps. Twin rear fog guard lamps. Hazard warning lamps. Halogen headlamps incorporating front side/indicator lamps. Cigar lighter. Push-button LW/MW radio. Illuminated switchgear and heater controls.

Instrumentation

Printed circuit connections. Speedometer with trip recorder. Tachometer incorporating digital clock. Fuel level and water temperature gauges. Warning lights for: Brake circuit failure/low fluid level, brake pad wear, choke, handbrake, oil pressure, seat belt, ignition, main beam, indicators, hazard lamps, heated rear window, rear fog lamps.

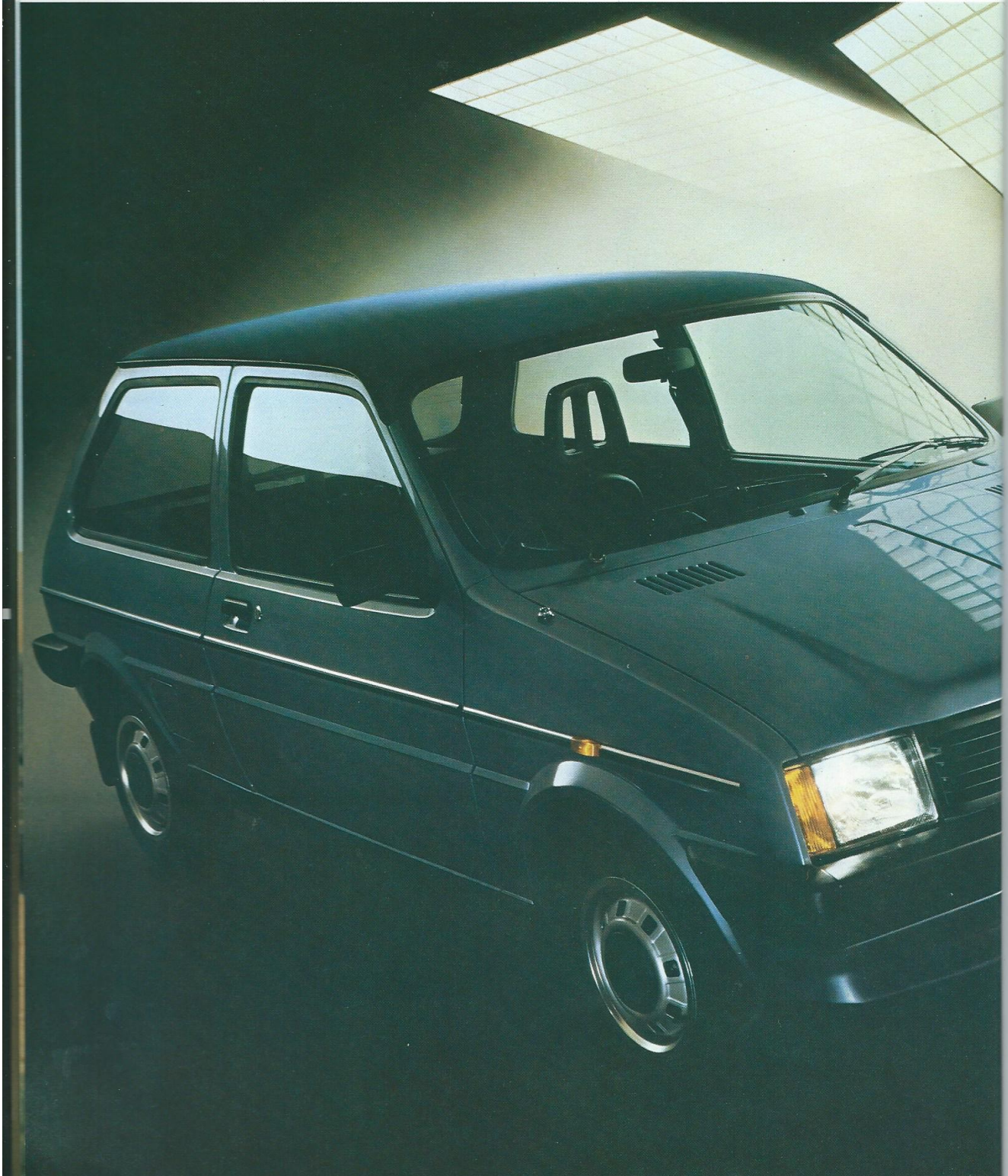
Interior Features

Laminated windscreen. Tinted glass. Herringbone fabric seat coverings. Tilt/slide front seats with reclining squabs and valances. Asymmetric, jack-knife folding rear seats with hinged/detachable carpeted rear shelf. Fitted carpet. Twin sun visors with passenger vanity mirror and driver's ticket pocket. Dipping rear view mirror. 4 spoke steering wheel. Front parcel shelf. Fresh air heater/demister with 2-speed fan and face level air vents. Passenger grab handles and coat hooks. Glovebox with carpeted lining. Rear quarter trays. Loadspace floor mat and PVC trimmed sides. Interior bonnet release. Concealed inertia reel front seat belts. Front door armrests and door bins.

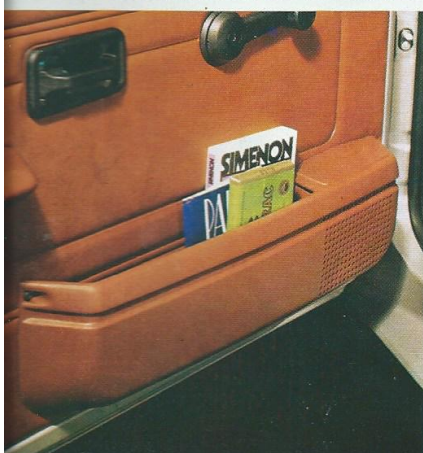
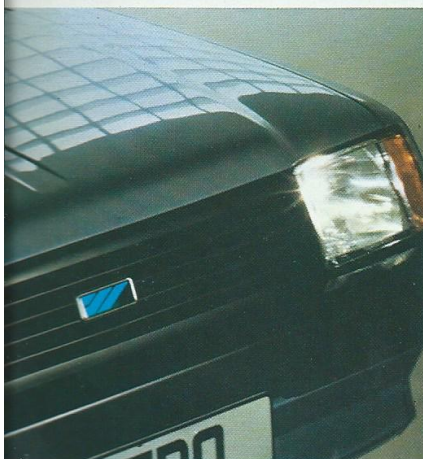
Body Features

2 door hatchback, all steel unitary construction. Black rolled section bumpers with moulded wrap around cappings. Driver's door mirror. Side repeater flashers. Tailgate controlled by twin gas struts. Two-colour side decal stripes. Fuel filler concealed behind flap. Extensive corrosion protection, including cathodic electrocoat primer on body and subframes, underbody seal and wax-injection of box sections.

METRO HLS



- Velour seat facings
- Velour door casings
- Front seat head restraints
- Side rubbing strip
- Carpeted load space



Engine

4 cylinder transverse. 4-star (97 octane) fuel. OHV 1275 cc. 60 bhp.

Transmission

4-speed all-synchromesh, remote control. Diaphragm spring clutch hydraulically operated. Integral final drive.

Suspension

Front: independent, Hydragas® springs, telescopic dampers, anti-roll bar.

Rear: independent, trailing arms, Hydragas® springs with internal damping plus coil pre-load springs.

Steering

Rack and Pinion.

Brakes

Servo assisted dual circuit system with duplicated front brake lines. Front 21.3 cm discs, 17.8 cm rear drums.

Wheels and tyres

Pressed steel ventilated disc wheels, 155/70 x 12 steel braced low profile radial ply tyres. Moulded hub covers and trim rings.

Electrical

12 volt negative earth system. Alternator. Twin column stalks for indicators, horn, dip and 2 speed wipers with electric screen washers and flick wipe. Rear screen wash/wipe. Thermostatic electric cooling fan. Heated rear window. Reversing lamps. Twin rear fog guard lamps. Hazard warning lamps. Halogen headlamps incorporating front side/indicator lamps. Cigar lighter. Push-button LW/MW radio. Illuminated switchgear and heater controls.

Instrumentation

Printed circuit connections. Speedometer with trip recorder. Tachometer incorporating digital clock. Fuel level and water temperature gauges. Warning lights for: Brake circuit failure/low fluid level, brake pad wear, choke, handbrake, oil pressure, seat belt, ignition, main beam, indicators, hazard lamps, heated rear window, rear fog lamps.

Interior Features

Laminated windscreen. Tinted glass. Velour seat facings. Tilt/slide front seats with reclining squabs, head-restraints and valances. Brushed nylon headlining. Asymmetric, jack-knife folding rear seats with hinged/detachable carpeted rear shelf. Fitted carpet. Twin cloth-faced sun visors with passenger vanity mirror and driver's ticket pocket. Dipping rear view mirror. 4 spoke steering wheel. Front parcel shelf. Fresh air heater/demister with 2-speed fan and face level vents. Passenger grab handles and coat hooks. Glovebox with carpeted lining. Fascia shelf anti-slip mat. Rear quarter trays. Loadspace carpeting and PVC trimmed sides. Handbrake grip. Interior bonnet release. Concealed inertia reel front seat belts. Cloth trimmed door and rear quarter casings. Front door armrests and door bins.

Body Features

2 door hatchback, all steel unitary construction. Black rolled section bumpers with moulded wrap around cappings. Twin door mirrors. Side repeater flashers. Tailgate controlled by twin gas struts. Side rubbing strip. Lockable fuel filler cap behind flap. Extensive corrosion protection including cathodic electrocoat primer on body and subframes, underbody seal and wax-injection of box sections.

METRO Auto

Velour seat fabric
Velour door
Front seat head
Side rubbing strip
Carpeted load space



- New 4-speed automatic gear box
- Velour seat facings
- Split action rear seat
- Push button radio
- Styled Halogen headlamps



Engine

4 cylinder transverse. 4-star (97 octane) fuel. OHV 1275 cc. 60 bhp.

Transmission

4 speed automatic with manual override facility and illuminated colour-change selector indicator. Integral final drive.

Suspension

Front: independent, Hydragas® springs, telescopic dampers, anti-roll bar.

Rear: independent, trailing arms, Hydragas® springs with internal damping plus coil pre-load springs.

Steering

Rack and Pinion.

Brakes

Servo assisted dual circuit system with duplicated front brake lines. Front 21.3 cm discs, 17.8 cm rear drums.

Wheels and tyres

Pressed steel ventilated disc wheels, 155/70 x 12 steel braced low-profile radial ply tyres. Moulded hub covers.

Electrical

12 volt negative earth system. Alternator. Twin column stalks for indicators, horn, dip and 2 speed wipers with electric screen washers and flick wipe. Rear screen wash/wipe. Thermostatic electric cooling fan. Heated rear window. Reversing lamps. Twin rear fog guard lamps. Hazard warning lamps. Halogen headlamps incorporating front side/indicator lamps. Cigar lighter. Push-button LW/MW radio. Illuminated switchgear and heater controls.

Instrumentation

Printed circuit connections. Speedometer with trip recorder. Analogue clock. Fuel level and water temperature gauges. Warning lights for: Brake circuit failure/low fluid level, brake pad wear, choke, handbrake, oil pressure, seat belt ignition, main beam, indicators, hazard lamps, heated rear window, rear fog lamps.

Interior Features

Laminated windscreen. Velour fabric seat covering. Tilt/slide front seats with reclining squabs. Asymmetric, jack-knife folding rear seats with hinged/detachable carpeted parcel shelf. Fitted carpet. Twin sun visors with passenger vanity mirror and driver's ticket pocket. Dipping rear view mirror. 4 spoke steering wheel. Front parcel shelf. Fresh air heater/demister with 2-speed fan and face level air vents. Passenger grab handles and coat hooks. Glovebox with carpet lining. Rear quarter trays. Loadspace floor mat and PVC-trimmed sides. Interior bonnet release. Concealed inertia reel front seat belts. Front door armrests and door bins.

Body Features

2 door hatchback, all steel unitary construction. Black rolled section bumpers with moulded wrap-around cappings. Driver's door mirror. Side repeater flashers. Tailgate controlled by twin gas struts. Side rubbing strip. Fuel filler concealed behind flap. Extensive corrosion protection, including cathodic electrocoat primer on body and subframes, underbody seal and wax-injection of box sections.

Model AUSTIN METRO	Standard and L	HLE	1.3S/HLS	1.3 Automatic	
Engine Capacity cc/Cylinders	998/4	998/4	1275/4	1275/4	
Bore x Stroke mm	64.58 x 76.20	64.58 x 76.20	70.64 x 81.28	70.64 x 81.28	
Max BHP (DIN) at RPM	45 at 5000*	47 at 5500	60 at 5250	60 at 5250	
Max Torque kgm (DIN) at RPM	7.77 at 2750*	7.47 at 3250	9.63 at 3200	9.63 at 3200	
Gear Ratios Manual/Auto	1st	3.647/-	3.647/-	3.647/-	-/2.690
	2nd	2.184/-	2.184/-	2.184/-	-/1.845
	3rd	1.425/-	1.425/-	1.425/-	-/1.460
	4th	1.00/-	1.00/-	1.00/-	-/1.00
	5th	-	-	-	-
	Reverse	3.666/-	3.666/-	3.666/-	-/2.690
	Final Drive	3.647/-	3.44/-	3.44/-	-/2.76
Fuel consumption (all figures in mpg-L/100 km) are from officially approved tests under the Passenger Car Fuel Consumption Order 1977.					
Manual Transmission					
Constant speed driving (56 mph/90 kmh)	53.1 (5.3)*	58.3 (4.8)	51.2 (5.5)	-	
Constant speed driving (75 mph/120 kmh)	38.5 (7.3)*	41.7 (6.8)	37.9 (7.5)	-	
Simulated urban driving	38.4 (7.4)*	41.5 (6.8)	32.8 (8.6)	-	
Automatic Transmission					
Constant speed driving (56 mph/90 kmh)	-	-	-	47.0 (6.0)	
Constant speed driving (75 mph/120 kmh)	-	-	-	34.9 (8.1)	
Simulated urban driving	-	-	-	33.5 (8.4)	
Towing Limits/Roof rack weights					
Max towing limit (2-up) (cwt/kg)	16.7/850	12.8/650	18.7/950	12.8/650	
Max roof rack load (lb/kg)	105/48	105/48	105/48	105/48	
Insurance Group (as recommended by the Accident Offices Association)	1	1	2	2	
Servicing Intervals-Major/intermediate (miles)	12,000	12,000	12,000	12,000/6,000†	
Fuel (Star Rating)/Octane	4/97	4/97	4/97	4/97	
Dimensions:	Length in/m	134.0/3.40	134.0/3.40	134.0/3.40	134.0/3.40
	Width in/m	60.9/1.54	60.9/1.54	60.9/1.54	60.9/1.54
	Height in/m	52.3/1.33	52.3/1.33	52.3/1.33	52.3/1.33
	Wheelbase in/m	88.6/2.25	88.6/2.25	88.6/2.25	88.6/2.25
	Turning circle ft/m	33.5/10.2	33.5/10.2	33.5/10.2	33.5/10.2
Load capacity (cu ft)	7.47/45.7	7.47/45.7	7.47/45.7	7.47/45.7	
Fuel tank capacity gals/litres	6.5/29.5	6.5/29.5	6.5/29.5	6.5/29.5	

Optional Extras: Denovo wheels and tyres. Headlamp wash unit (HLE, S, Auto and HLS models only). Laminated windscreen (standard on L, HLE, S, Auto and HLS models). Paint finish - Black, Metallic, Clear Coat Metallic. Manual radio/stereo cassette (Metro, L, HLE, S, Auto, HLS). Push-button radio (standard on HLE, S, Auto and HLS models). Push-button radio/stereo cassette with Dolby (Metro, L, HLE, S, Auto, HLS). Rear window wash/wipe (standard on L, HLE, S, Auto and HLS models). Slotted head restraints (L, HLE and S models only, standard on Auto and HLS models). Tilting/removable steel sunroof (L, HLE, S, Auto and HLS models only). Trip computer (HLS models only).
† Oil change only. *Normal compression engine.