

# METRO CITY

## METRO CITY AUTOMATIC

### EXTERIOR

For first time buyers, or as the second car for the family or working couple, Metro 1.0 City is the answer – budget-conscious but smart, and with the choice of three or five-door models.

The new Metro City 1.3 Automatic makes the comfort and ease of automatic driving available at a wonderfully affordable price. It's ideal for the less mobile, or for people who just want to spoil themselves a little.

### Trim and Equipment

With a smart grey exterior trim enhancing its cheeky good looks, Metro City is also well-equipped. A laminated windscreen, heated rear window and locking fuel filler cap are among its notable features. You need fewer keys now too; single key locking for doors and ignition is one of the convenient new features for summer '87.

### EXTERIOR

#### Trim

- Grey moulded headlamp bezels*
- Grey grille*
- Grey rolled section steel bumpers*
- Grey door handles*
- City logo on side and tailgate*
- Moulded centre wheel caps*
- Styled TD wheels*

#### Equipment

- Single key locking*
- Laminated windscreen*
- Driver's door mirror*
- Rectangular tungsten headlamps with dim/dip*
- Integrated front spoiler*
- Locking fuel filler cap*
- Push-button tailgate release*
- Loadspace mat*
- Hardboard spare wheel cover*
- Moulded loadspace side casings*
- Reversing lamps*
- Single rear fog guard lamp*
- Heated rear window*

#### CITY 1.3 AUTOMATIC:

- Additions/changes to 1.0 CITY*
- 1275 cc engine*
- Breakerless ignition*
- 4-speed automatic gearbox*



## INTERIOR

### Trim

Folding rear seat  
Front and rear inertia reel seat belts  
Sawtooth/PVC seat facings with  
PVC backs and borders  
Reclining front seats  
Controlled forward movement  
front seats (3-dr)  
Lower seat belt anchorages with  
slider bar (3-dr)  
Swivelling sunvisors  
Passengers parcel shelf  
Needle punch carpet  
Moulded 'A' posts  
PVC door trim  
Door pulls  
Cloth headlining (5-dr)  
Door bins

### Equipment

Cointray  
Twin illuminated column stalks  
operating:  
Left hand – horn, headlamp  
on/off, dip/flash, indicators  
Right hand – 2-speed wipers  
with flick wipe/electric washers  
Instruments:  
Speedometer with trip  
odometer  
Water temperature gauge  
Fuel level gauge  
Warning lamps:  
Brake failure/low fluid  
Front brake pad wear  
Handbrake on  
Oil pressure  
Ignition  
Main beam  
Indicators  
Hazard warning  
Side lamps on  
Choke on  
Twin outboard air vents  
Illuminated heater controls  
Side window demisters  
Two-speed heater fan  
Dipping rear view mirror  
'A' frame steering wheel

## METRO CITY INTERIOR

### Trim

Price-leader though it is, Metro City doesn't cut corners where comfort's concerned. The seats are upholstered in practical Sawtooth fabric and PVC, and the front seats are fully reclining; they tilt and slide forward for easy access on three-door models. There's useful stowage space in the door bins and coin tray, and thoughtful touches such as swivelling sunvisors.

### Equipment

A dipping rear view mirror, trip odometer and illuminated column stalks and heater controls are all part of the City's excellent specification. Warning lamps include front brake pad wear and choke on.



**CITY 1.3 AUTOMATIC:**  
additions/changes to 1.0 CITY  
Automatic selector  
Centre console  
Cut pile carpet

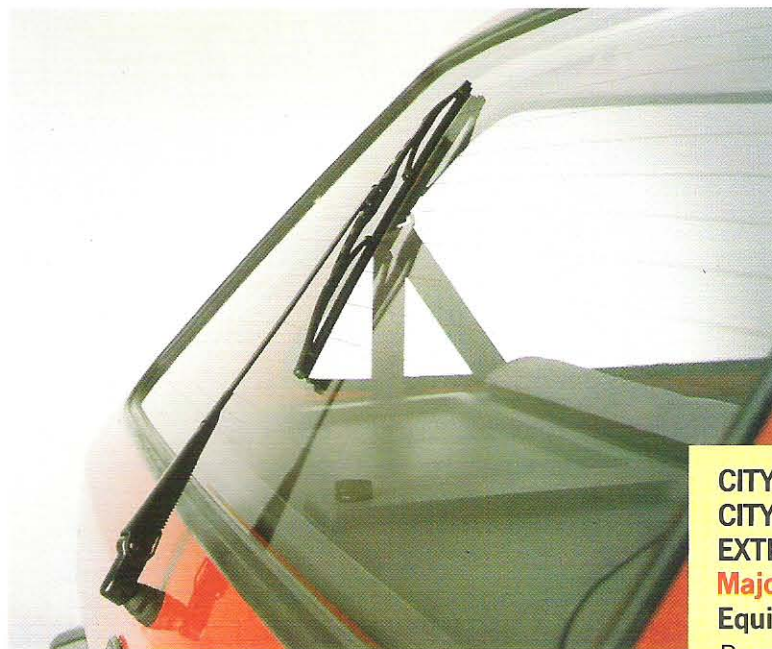
## METRO CITY X

The affordable Metro with that bit more to offer; City X is available as 1.0 three-door or 1.3 five-door – hard-working family-style hatchbacks and frugal transport for the commuter.

### EXTERIOR

#### Trim and Equipment

Distinguished by its special logo, City X has two additional items of equipment – a passenger door mirror to make manoeuvring even easier, and a rear wash/wipe to keep a clear view out at the back.



**CITY X: Additions/changes to 1.0 CITY**

### EXTERIOR

#### Major features

#### Equipment

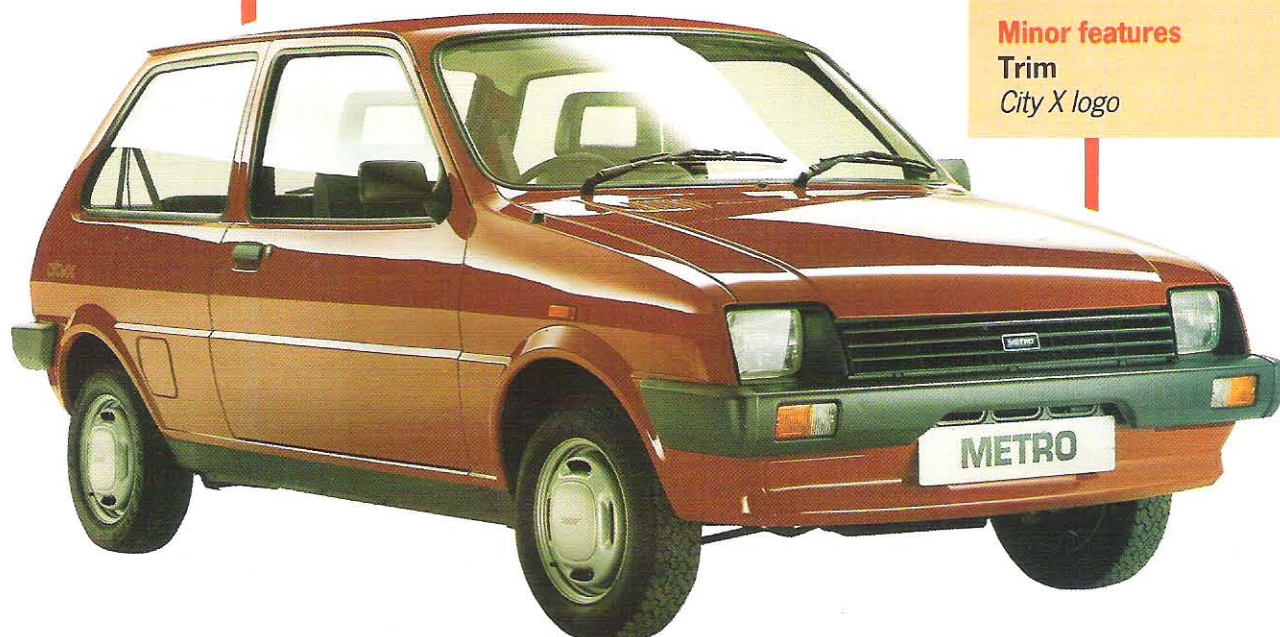
Rear wash/wipe

Passenger door mirror

#### Minor features

#### Trim

City X logo



## METRO CITY X INTERIOR

### Trim

Stylish Sonar Marle and plain velour seat facings, front head restraints and door armrests are among the value for money features of City X.

There's the concealment of a saloon-style boot too, with the folding/removeable rear parcel shelf.

### Equipment

Time-keeping is easy in City X, with the fascia-mounted digital clock.



### CITY X: Additions/changes to CITY INTERIOR

#### Major features

##### Trim

Sonar marle/plain velour seat facings

Front 'A' frame head restraints

Door armrests

Rear parcel shelf

##### Equipment

Digital clock



## METRO L AND AUTOMATIC

Comfortable, versatile and thoroughly equipped, the Metro L models are available in four combinations of doors and engine sizes. The Metro 1.3 Automatic shares all the features of the L model.

### EXTERIOR

#### Trim

These good-looking Metros have grey moulded bumpers and styled headlamps; at the side, they're distinguished by a protective rubbing strip and attractive full wheel trims.

#### Equipment

Powerful halogen beams cut through the dark and poor weather, and twin fog guard lamps are fitted.



### L AND AUTOMATIC:

Additions/changes to CITY X

#### EXTERIOR

##### Major features

#### Trim

Moulded bumpers

Side rubbing strip

Full wheel trim

#### Equipment

Styled halogen headlamps

##### Minor features

#### Trim

Grey drip rail finisher

#### Equipment

Additional rear fog guard lamp

1. In addition to door armrests and a rear parcel shelf, what two other **interior trim** features differentiate City X from City?
2. What item of **interior equipment** does City X offer over City?

1. a) Sonar Marle/Plain velour seat facings
- b) Front head restraints
2. Digital clock

## METRO L AND AUTOMATIC INTERIOR

### Trim

These of course are the models where Metro versatility comes into its own, with the 60/40 split folding rear seat.

But practicality certainly doesn't sacrifice comfort – quite the contrary. A cut pile carpet and centre console contribute to the well-appointed feel of the interior, whilst the seats are upholstered in Plain and Moonstripe tweed.



### L AND AUTOMATIC:

#### Additions/changes to CITY X INTERIOR

##### Major features

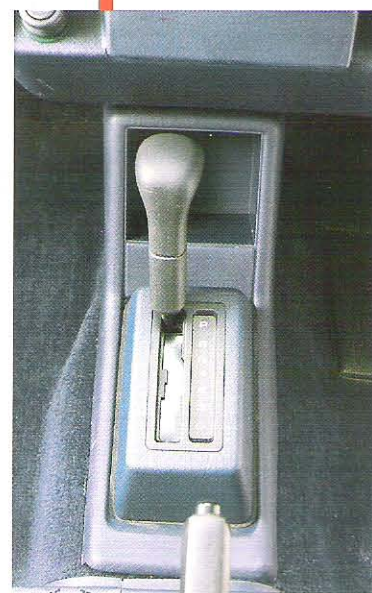
##### Trim

- 60/40 split folding rear seats
- Plain/moonstripe seat facings
- Cut pile carpet
- Centre console

##### Minor features

##### Trim

- Styled door armrests
- Grab handles
- Vanity mirror
- Moulded gear level gaiter (not Auto.)
- Handbrake gaiter



1. What major item of exterior equipment does Metro L offer over City X?

2. In addition to moulded bumpers and a side rubbing strip, what other item of exterior trim differentiates L from City X?

1. Halogen headlamps
2. Full wheel trims

### Equipment

The sporty three-spoke steering wheel is a new L feature for summer '87. In addition, Metro L offers four more items of equipment over City X. There's a push-button radio (now with twin speakers) for sound on the move. The glovebox is illuminated to make it easier to find oddments at night, and a glow-ring cigar lighter is provided for smokers. Finally, the driver's door mirror can be conveniently adjusted from inside the car.



#### METRO L AND AUTOMATIC:

Additions/changes to CITY X

#### INTERIOR

#### Major features

#### Equipment

- 3-spoke steering wheel
- 2-band push-button radio with twin speakers
- Illuminated glovebox
- Illuminated cigar lighter
- Internally adjustable driver's door mirror

1. In addition to a full wheel trim, what two other major exterior trim features differentiate Metro L from City X?
2. In addition to the 60/40 split folding rear seat and Plain/Moonstripe tweed seat facings, what two other major items of interior trim does Metro L offer over City X?

1. a) Grey moulded bumpers  
b) Side rubbing strip
2. a) Centre console  
b) Cut pile carpet

## METRO MAYFAIR

Eye-catching and luxurious but keenly priced, Metro Mayfair is the car for those who want to cut a dash in the rush hour.

### EXTERIOR

#### Trim

With distinctive new wheel trims and a special coachline, Mayfair is a real attention-getter. Additional brightwork on the door handles, screen and rubbing strip inserts adds the finishing touch.



### MAYFAIR: Additions/changes to L EXTERIOR

#### Major features

##### Trim

New-style wheel trims

##### Equipment

Bronze-tinted glass

Intermittent rear wash/wipe

Programmed wash/wipe with intermittent variable delay

Opening rear quarter windows (3-dr)

#### Minor features

##### Trim

Silver-finish grille, bright screen inserts, door handles and rubbing strip

Coachline with Mayfair logo

#### Equipment

Bronze-tinted glass is a special Mayfair luxury, and it's also unusually well-equipped for rainy days. The intermittent wipe has a variable delay which is extremely useful in catering for varying degrees of drizzle and road spray. The wash/wipe is programmed to automatically sweep the screen when the washer button is pressed. And there's even an intermittent rear wash/wipe.

In addition, three-door Mayfair models have opening rear quarter windows to boost the fresh air flow on hot days.

*In addition to a push-button radio, three-spoke steering wheel and illuminated glovebox, what two other items of interior equipment does Metro L offer over City X?*

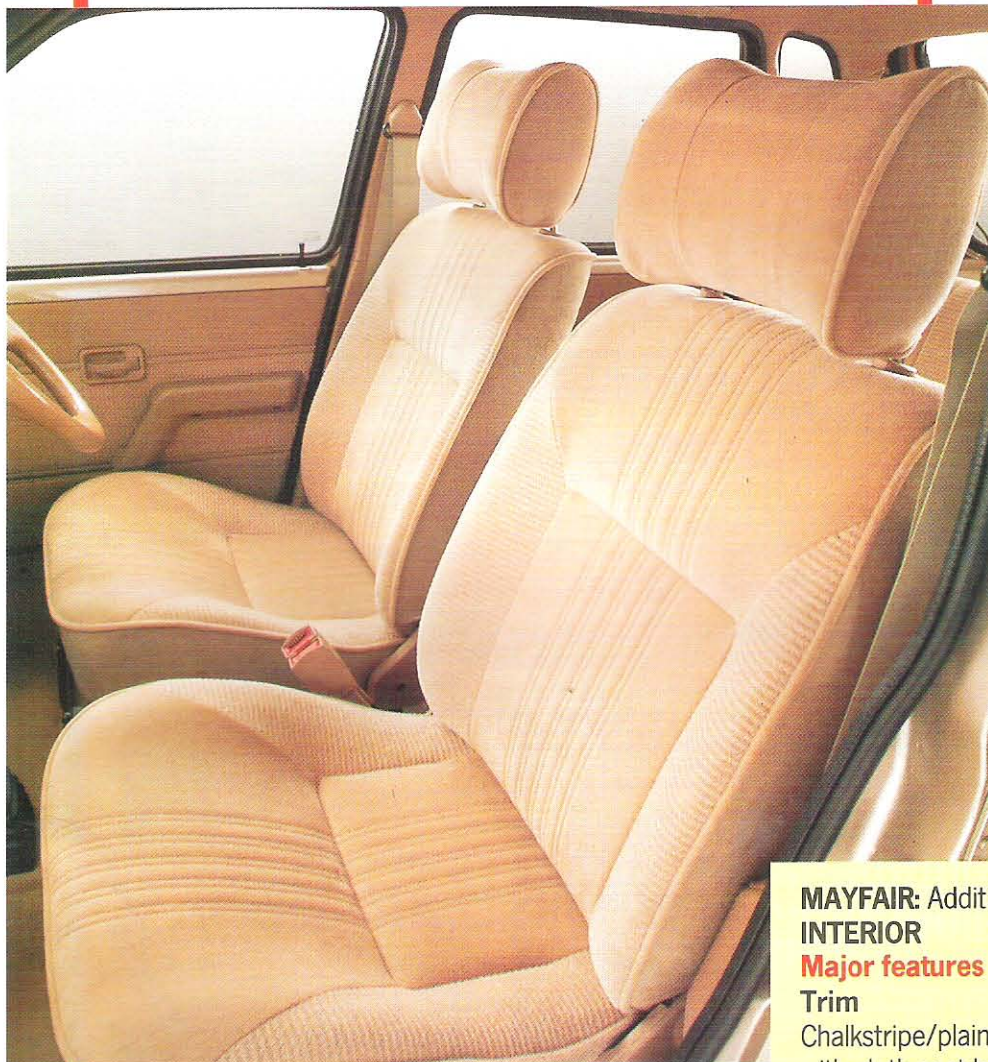


1. *Illuminated cigar lighter*
2. *Internally adjustable driver's door mirror*

## METRO MAYFAIR INTERIOR

### Trim

The Mayfair interior has a genuinely up-market feel to it. The seats are sumptuously trimmed, with Chalkstripe and plain velvet facings and cloth backs and borders. The doors too are velvet-trimmed, and fully upholstered front head restraints contribute to the distinctly plush appearance.



### MAYFAIR: Additions/changes to L INTERIOR

#### Major features

##### Trim

Chalkstripe/plain velvet seat facings with cloth seat backs and borders  
Chalkstripe velvet door inserts  
Fully upholstered head restraints

#### Minor features

##### Trim

*Carpeted rear parcel shelf*

1. What major **exterior trim** feature distinguishes Mayfair from L?<sup>2</sup>
2. In addition to opening rear quarter windows (on three-door models) and tinted glass, the Mayfair offers three more items of **exterior equipment**, all of which make a useful contribution to visibility in poor weather. What are they?<sup>2</sup>

1. New-style wheel trims
2. a) Programmed wash/wipe  
b) Intermittent wipe variable delay  
c) Rear intermittent wipe

## METRO MAYFAIR INTERIOR

### Equipment

A superb electronic tune stereo radio/stereo cassette player with four speakers is the Mayfair's most exciting new feature. In addition, Mayfair offers three more major items of interior equipment over the L models. Central locking opens all the doors and tailgate in a trice, and at night, there's the convenience of footwell illumination. The digital clock is located in a roof-mounted console, making room for two additional face-level vents in the fascia.



### MAYFAIR: Additions/changes to L INTERIOR

#### Major features

##### Equipment

Electronic stereo radio/stereo cassette player with four speakers  
Central door locking  
Footwell illumination  
Roof-mounted console with digital clock

#### Minor features

##### Equipment

Centre face level vents  
Cassette stowage in centre console



1. Velvet door inserts
2. Fully upholstered head restraints

## QUESTIONS

# INTERIM TEST

*Before you continue, check your knowledge of Metro features by completing the following Interim Test.*

1. In addition to rear wash/wipe, what other item of **exterior equipment** does City X offer over City?
2. In addition to Sonar Marle seat facings and front head restraints, what two other **interior trim** features does City X offer over City?
3. What item of **interior equipment** does City X offer over City?
4. What three **exterior trim** features distinguish L from City X?
5. What major item of **exterior equipment** do L models offer over City X?
6. In addition to a centre console and cut pile carpet, what two other major items of **interior trim** do L models offer over City X?
7. In addition to an illuminated cigar lighter and internally adjustable driver's door mirror, what three other items of **interior equipment** do L models offer over City X?
8. What major **exterior trim** feature distinguishes Mayfair from L?
9. In addition to programmed wash/wipe with intermittent variable delay, and intermittent rear wash/wipe, what two other items of **exterior equipment** does Mayfair offer over L?
10. In addition to velvet door inserts and fully upholstered head restraints, what other major **interior trim** feature does Mayfair offer over L?
11. What new in-car audio system is fitted to Mayfair?
12. In addition to central locking and a roof-mounted digital clock, what other major item of **interior equipment** does Mayfair offer over L?

## ANSWERS

# INTERIM TEST

1. In addition to rear wash/wipe, what other item of **exterior equipment** does City X offer over City?

Passenger door mirror

2. In addition to Sonar Marle seat facings and front head restraints, what two other **interior trim** features does City X offer over City?

- a) Door armrests
- b) Rear parcel shelf

3. What item of **interior equipment** does City X offer over City?

Digital clock

4. What three **exterior trim** features distinguish L from City X?

- a) Full wheel trim
- b) Rubbing strip
- c) Moulded bumpers

5. What major item of **exterior equipment** do L models offer over City X?

Halogen headlamps

6. In addition to a centre console and cut pile carpet, what two other major items of **interior trim** do L models offer over City X?

- a) 60/40 split folding rear seat
- b) Plain/Moonstripe seat facings

7. In addition to an illuminated cigar lighter and internally adjustable driver's door mirror, what three other items of **interior equipment** do L models offer over City X?

- a) Push-button radio
- b) Three-spoke steering wheel
- c) Illuminated glovebox

8. What major **exterior trim** feature distinguishes Mayfair from L?

New-style wheel trims

9. In addition to programmed wash/wipe with intermittent variable delay, and intermittent rear wash/wipe, what two other items of **exterior equipment** does Mayfair offer over L?

- a) Tinted glass
- b) Opening rear quarter windows (3-dr)

10. In addition to velvet door inserts and fully upholstered head restraints, what other major **interior trim** feature does Mayfair offer over L?
- Chalkstripe velvet seat trim with cloth backs and borders.

11. What new in-car audio system is fitted to Mayfair?

Electronic stereo radio/cassette player

12. In addition to central locking and a roof-mounted digital clock, what other major item of **interior equipment** does Mayfair offer over L?

Footwell illumination

# METRO VANDEN PLAS

Combining limousine elegance and comfort with small-car economy and practicality, the Vanden Plas is a natural choice for those trading down from a larger car – or for drivers who simply want to pamper themselves a little.



## EXTERIOR

### Trim

Body colour bumpers and a bright bonnet finisher create an immediate impression of unusual style. The Vanden Plas side view is distinguished by its unique wheel trims and coachline, whilst at the rear it features a bright tailgate finisher with a grey applique panel.

### Equipment

A glass sunroof is among the distinctive Vanden Plas luxuries – tiltable, or completely removeable for really hot days.



## VANDEN PLAS: Additions/changes to MAYFAIR EXTERIOR

### Major features

#### Trim

Body colour bumpers with grey inserts  
Bright bonnet finisher  
Bright tailgate finisher with grey applique panel  
VP wheel trim

#### Equipment

Tilt/removable glass sunroof

### Minor features

#### Trim

Bright tailpipe trim  
Coachline with VP logo

*In addition to footwell illumination, what three other major items of interior equipment does Mayfair offer over L?*

- a) Electronic stereo radio/stereo cassette player
- b) Central locking
- c) Roof-mounted digital clock

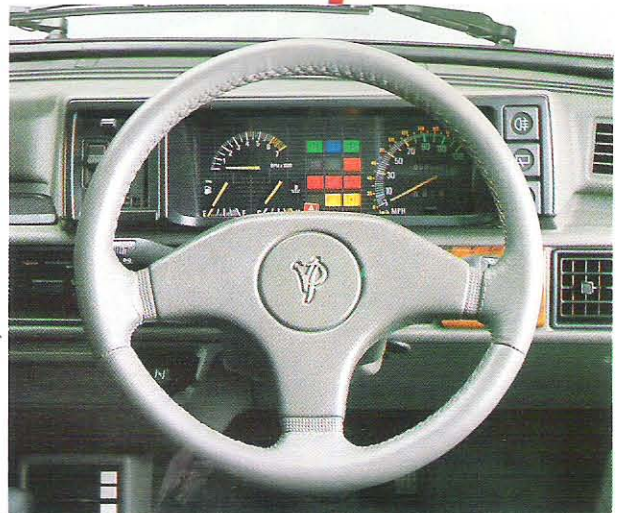
## METRO VANDEN PLAS INTERIOR

### Trim

The Vanden Plas interior is quite simply unique in its class for hand-crafted luxury, with the rich glow of burr walnut on doors and fascia complemented by soft Box velvet upholstery (or optional leather). The steering wheel is leather bound, and there are nice detail touches such as the fascia mat and the moulded interior posts.



Optional leather trim



### VANDEN PLAS: Additions/changes to MAYFAIR INTERIOR

#### Major features

##### Trim

- Box/plain velvet seat facings
- Box velvet door inserts
- Burr walnut door and fascia inserts
- Leather-bound steering wheel

##### Equipment

- Auto-reverse cassette player/ autostore radio
- Electric front windows
- Tachometer
- Warning lamps for low fuel and high engine temperature
- Internally adjustable passenger door mirror

#### Minor features

##### Trim

- Fascia mat
- Moulded 'B' and 'D' posts

### Equipment

The Vanden Plas driver doesn't even have to bother about changing to the other side of the cassette now, courtesy of the new stereo radio/cassette player with Autoreverse. The front windows are electrically controlled, and there are numerous other additions to equipment; the tachometer reminds you of the sporting nature of the 1.3 performance engine, and warning lamps are provided for low fuel and high engine temperature. Interior adjustment for the passenger door mirror completes the prestigious specification.

*In addition to its body colour bumpers and extra bright treatment, what other major exterior trim feature distinguishes Vanden Plas from Mayfair?*

*2. What major item of exterior equipment distinguishes Vanden Plas from Mayfair?*

1. VP wheel trims
2. Glass sunroof

## MG METRO 1300

The dashing MGs are definitely cars to be seen in with their new range of all-body colour treatments. Lively and chic, they're an irresistible choice for the style-conscious young professional who wants to stand out from the crowd.

### EXTERIOR

#### Trim

The MG's all-body colour treatment, including grille, bumpers, door mirrors and door handles, is teamed up with attractive new full wheel trims.



**MG 1300:** Additions/changes to 1.3L 3-dr

### EXTERIOR

#### Major features

##### Trim

Body colour grille, bumpers, door handles, door mirrors, tailgate spoiler

##### Equipment

Bronze-tinted glass  
Tilt/removable glass sunroof

#### Minor features

##### Trim

Full wheel trims (body colour on White Diamond)

##### Equipment

Opening rear quarter windows

### Equipment

In keeping with its sporting nature, the MG is fitted with a tailgate spoiler (also body colour) to further reduce rear drag. Programmed wash/wipe with variable delay intermittent wipe, plus intermittent rear wash/wipe give easy control for poor weather. The MG lacks nothing in luxury equipment either – a glass sunroof and tinted glass are standard.



1. In addition to box velvet seat facings and a leather-bound steering wheel, what two other major **interior trim** features does the Vanden Plas offer over Mayfair?
2. An internally adjustable passenger door mirror and additional instrumentation are two of the four items of **interior equipment** which Vanden Plas offers over Mayfair. What are the other two?

1. a) Velvet trimmed doors  
b) Burr walnut door and fascia inserts
2. a) Electric front windows  
b) Autoreverse cassette player/autostore radio

## MG 1300 INTERIOR

### Trim

The extrovert driver couldn't ask for more from the MG interior, with its sport style seats trimmed in Marle Deco and plain velour, cloth door inserts, and red piping matching the seat belts. Fully upholstered head restraints, a leather-bound steering wheel and a cloth headlining complete the quality atmosphere.

### Equipment

Sporting but never spartan, the MG pampers driver and passengers with abundant luxuries. They include a stereo radio/stereo cassette player (with handy stowage for cassettes in the centre console), central locking and refinements such as footwell illumination. The instrumentation has a tachometer and additional warning lamps, whilst central face vents combine with the opening rear quarter windows to give extra fresh air. An internally adjustable passenger door mirror is new for summer 87.

### INTERIOR

**MG 1300:** Additions/changes to 1.3L

#### Major features

##### Trim

Marle deco/plain velour sports style seats with red piping.

##### Equipment

3-band electronic tune stereo radio/stereo cassette player with 4 speakers

Central door locking

#### Minor features

##### Trim

Marle deco door inserts

Fully upholstered head restraints

Red inertia reel front and rear seat belts

Cloth headlining

Leather-bound steering wheel

##### Equipment

Internally adjustable passenger door mirror

Footwell illumination

Cassette stowage in centre console

Tachometer

Warning lamps for low fuel and high engine temperature

Roof-mounted console with digital clock



1. What major exterior trim feature does the MG offer over the Metro 1.3L?
2. In addition to a sunroof and tinted glass, what major item of exterior equipment does MG offer over 1.3L?

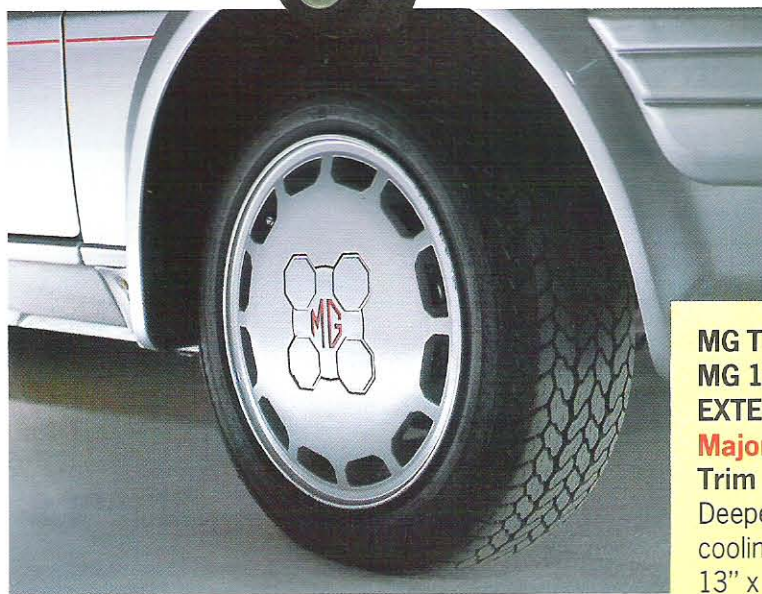
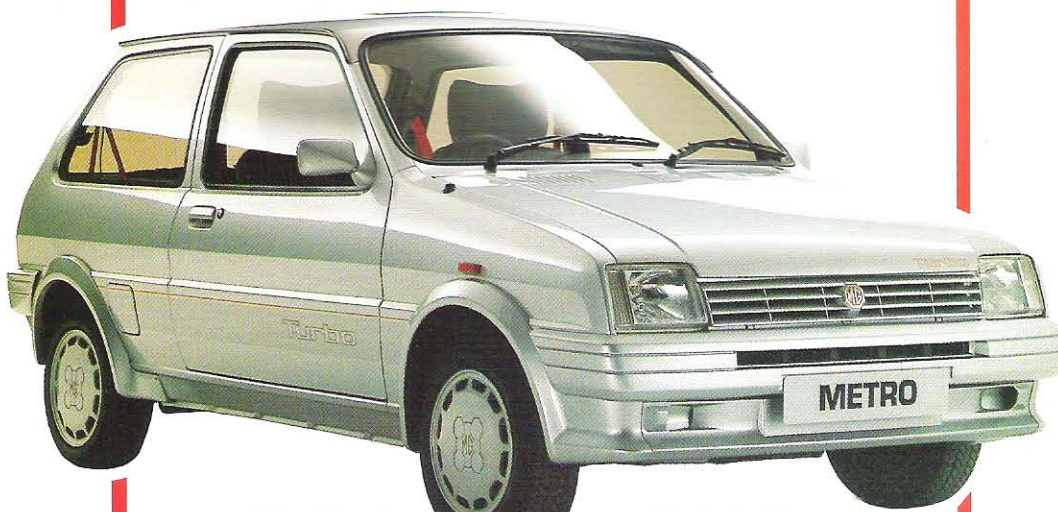


1. All-body colour treatment
2. Tailgate spoiler

## MG METRO TURBO

### EXTERIOR

As exciting to drive as it looks, the MG Turbo is both stylish and purposeful. Aerodynamics are aided by the deeper front spoiler, whilst the larger, 13 in. alloy wheels are fitted with low profile HR-rated tyres.



**MG TURBO:** Additions/changes to  
MG 1300  
EXTERIOR

#### Major features

##### Trim

Deeper front spoiler with brake cooling apertures  
13" x 5" sports alloy wheels

#### Minor features

##### Equipment

165/60 HR x 13 tyres

*In addition to sports style seats and a stereo radio/stereo cassette player, what third major interior feature differentiates the MG 1300 from Metro 1.3L?*

### MG TURBO INTERIOR

The Turbo offers all the luxuries of the MG 1300, plus its own unique upholstery. The strikingly styled sculptured velvet and plain velour seat trim and sculptured door inserts immediately distinguish the interior of Metro's sporting leader.



**MG TURBO:** Additions/changes to  
**MG 1300**  
**INTERIOR**

**Major features**

**Trim**

Sculptured velvet/plain velour seat trim with Turbo legend on front seats  
Sculptured velvet door inserts

The following questions will test you on every major Metro benefit you have covered in this book. If you've read it thoroughly there's no reason why you shouldn't get everything right – and prove to yourself that you really are ready to sell Metro's many strengths.

# QUESTIONS

# FINAL TEST

1. Complete the following table showing the Metro range structure:

	1.0		1.3	
	3-dr	5-dr	3-dr	5-dr
City				
City Automatic				
City X				
L				
1.3 Automatic				
Mayfair				
MG 1300				
MG Turbo				
Vanden Plas				

2. What are the three major benefits of Metro's good aerodynamics?
  - a) .....
  - b) .....
  - c) .....
3. What is the major benefit of the moulded cotton and jute felt used in the Metro's sound insulation?
 

.....
4. What are the two major benefits of the higher gear ratios on Metro 1.3 City X, L, Mayfair and Vanden Plas?
  - a) .....
  - b) .....

5. What is the Metro's turning circle?
 

.....
6. What is the major benefit of the Metro's rear suspension design?
 

.....
7. a) How long is Metro?
 

.....

 b) How wide is Metro?
 

.....
8. What is Metro's bootspace?
 

.....
9. What is Metro's loadspace?
 

.....
10. What are the six different configurations of Metro's loadspace design?
  - a) .....
  - b) .....
  - c) .....
  - d) .....
  - e) .....
  - f) .....
11. What is the constant 56 mph economy of the Metro 1.0L models?
 

.....
12. What is the constant 56 mph economy of the Metro 1.3 City X, L, and Mayfair?
 

.....
13. What is the 0-60 time of the MG Turbo?
 

.....

Complete the following to show the major differential features of the Metro range:

## QUESTIONS

# FINAL TEST

1. City X over City:  
EXTERIOR EQUIPMENT

- a) .....
- b) .....

2. City X over City:  
INTERIOR TRIM

- a) .....
- b) .....
- c) .....
- d) .....

3. City X over City:  
INTERIOR EQUIPMENT

.....

4. L over City X:  
EXTERIOR TRIM

- a) .....
- b) .....
- c) .....

5. L over City X:  
EXTERIOR EQUIPMENT

.....

6. L over City X:  
INTERIOR TRIM

- a) .....
- b) .....
- c) .....
- d) .....

7. L over City X:  
INTERIOR EQUIPMENT

- a) .....
- b) .....
- c) .....
- d) .....
- e) .....

8. Mayfair over L:  
EXTERIOR TRIM

.....

9. Mayfair over L:  
EXTERIOR EQUIPMENT

- a) .....
- b) .....
- c) .....
- d) .....

## QUESTIONS

# FINAL TEST

10. Mayfair over L:  
INTERIOR TRIM

- a) .....
- b) .....
- c) .....

11. Mayfair over L:  
INTERIOR EQUIPMENT

- a) .....
- b) .....
- c) .....
- d) .....

12. Vanden Plas over Mayfair:  
EXTERIOR TRIM

- a) .....
- b) .....
- c) .....

13. Vanden Plas over Mayfair:  
EXTERIOR EQUIPMENT

- .....

14. Vanden Plas over Mayfair:  
INTERIOR TRIM

- a) .....
- b) .....
- c) .....
- d) .....

15. Vanden Plas over Mayfair:  
INTERIOR EQUIPMENT

- a) .....
- b) .....
- c) .....
- d) .....

16. MG over L:  
EXTERIOR TRIM

- .....

17. MG over L:  
EXTERIOR EQUIPMENT

- a) .....
- b) .....
- c) .....

18. MG over L:  
INTERIOR

- a) .....
- b) .....
- c) .....

19. MG Turbo over MG 1300  
EXTERIOR

- a) .....
- b) .....

20. MG Turbo over MG 1300  
INTERIOR

- a) .....
- b) .....

## ANSWERS

# FINAL TEST

1. Complete the following table showing the Metro range structure:

	1.0		1.3	
	3-dr	5-dr	3-dr	5-dr
City	●	●		
City Automatic			●	
City X	●			●
L	●	●	●	●
1.3 Automatic			●	
Mayfair	●			●
MG 1300			●	
MG Turbo			●	
Vanden Plas				●

2. What are the three major benefits of Metro's good aerodynamics?
- Low wind noise
  - Higher top speed
  - Better economy
3. What is the major benefit of the moulded cotton and jute felt used in the Metro's sound insulation?
- It deadens a wider range of noise and vibration than other materials.
4. What are the two major benefits of the higher gear ratios on Metro 1.3 City X, L, Mayfair and Vanden Plas?
- Greater refinement
  - Better economy

5. What is the Metro's turning circle?

33 ft 6 ins

6. What is the major benefit of the Metro's rear suspension design?

The horizontal units give greater loadspace width.

7. a) How long is Metro?

11 ft 2 ins

- b) How wide is Metro?

5 ft 1 in

8. What is Metro's bootspace?

8.1 cu.ft.

9. What is Metro's loadspace?

33.7 cu.ft.

10. What are the six different configurations of Metro's loadspace design?

- Rear seat up parcel shelf in position
- Rear seat up parcel shelf removed
- Rear seat down
- Two thirds of rear seat down
- One third rear seat down
- One third rear seat down, front passenger seat reclined

11. What is the constant 56 mph economy of the Metro 1.0L models?

59.7 mpg

12. What is the constant 56 mph economy of the Metro 1.3 City X, L, and Mayfair?

57 mpg

13. What is the 0-60 time of the MG Turbo?

9.9 seconds

## ANSWERS

# FINAL TEST

1. City X over City:  
EXTERIOR EQUIPMENT

- a) rear wash/wipe
- b) Passenger door mirror

2. City X over City:  
INTERIOR TRIM

- a) Sonar Marle/Plain velour seat facings
- b) Front head restraints
- c) Door armrests
- d) Rear parcel shelf

3. City X over City:  
INTERIOR EQUIPMENT

Digital clock

4. L over City X:  
EXTERIOR TRIM

- a) Moulded bumpers
- b) Side rubbing strip
- c) Full wheel trim

5. L over City X:  
EXTERIOR EQUIPMENT

Styled halogen headlamps

6. L over City X:  
INTERIOR TRIM

- a) 60/40 split folding rear seat
- b) Plain/Moonstripe seat facings
- c) Cut pile carpet
- d) Centre console

7. L over City X:  
INTERIOR EQUIPMENT

- a) 3-spoke steering wheel
- b) 2-band push-button radio with twin speakers
- c) Illuminated glovebox
- d) Illuminated cigar lighter
- e) Internally adjustable driver's door mirror

8. Mayfair over L:  
EXTERIOR TRIM

New-style wheel trims

9. Mayfair over L:  
EXTERIOR EQUIPMENT

- a) Bronze-tinted glass
- b) Programmed wash/wipe with intermittent variable delay
- c) Intermittent rear wash/wipe
- d) Opening rear quarter windows (3-dr)

10. Mayfair over L:  
INTERIOR TRIM

- a) Chalkstripe velvet seat facings with cloth seat backs and borders
- b) Chalkstripe velvet door inserts
- c) Fully upholstered head restraints

11. Mayfair over L:  
INTERIOR EQUIPMENT

- a) Stereo radio/stereo cassette player with 4 speakers
- b) Central door locking
- c) Footwell illumination
- d) Roof-mounted console with digital clock

12. Vanden Plas over Mayfair:  
EXTERIOR TRIM

- a) Body colour bumpers
- b) Bright bonnet and tailgate finishers with grey tailgate panel
- c) VP wheel trims

13. Vanden Plas over Mayfair:  
EXTERIOR EQUIPMENT

Glass sunroof

## ANSWERS

# FINAL TEST

14. Vanden Plas over Mayfair:  
INTERIOR TRIM
- a) Box/Plain velvet seat facings
  - b) Box velvet door inserts
  - c) Burr walnut door and fascia inserts
  - d) Leather-bound steering wheel
15. Vanden Plas over Mayfair:  
INTERIOR EQUIPMENT
- a) Auto-reverse cassette player/autostore radio
  - b) Electric front windows
  - c) Tachometer and additional warning lamps
  - d) Internally adjustable passenger door mirror
16. MG over L:  
EXTERIOR TRIM
- All-body colour treatment
17. MG over L:  
EXTERIOR EQUIPMENT
- a) Glass sunroof
  - b) Tinted glass
  - c) Tailgate spoiler
18. MG over L:  
INTERIOR
- a) Sports style seats
  - b) Stereo radio/stereo cassette player
  - c) Central locking
19. MG Turbo over MG 1300:  
EXTERIOR
- a) Deeper front spoiler
  - b) Alloy wheels
20. MG Turbo over MG 1300:  
INTERIOR
- Sculptured velvet/plain seat trim  
Sculptured velvet door inserts





Produced by Training Services, Austin Rover Group Limited  
Marketing Training Centre, Studley, Warwickshire B80 7AJ  
The information included in this book was, to the best of our knowledge,  
correct at the time of going to press. However, it cannot be guaranteed  
that all details will be correct at any later date.